



Product Brochure

Smoke Control



Over 20 years
in the smoke
industry to gi
peace of min
getting the ri



experience
ventilation
we you the
d you're
ght products





Contents

We pride ourselves on using only the best smoke control products on the market. See our range of products and services to discover more.



08

Fans

Mechanical extract fans for use as part of a mechanical smoke system.



14

Smoke Vents

Facade, roof and smoke shaft vents available in various sizes and finishes to suit almost every application.



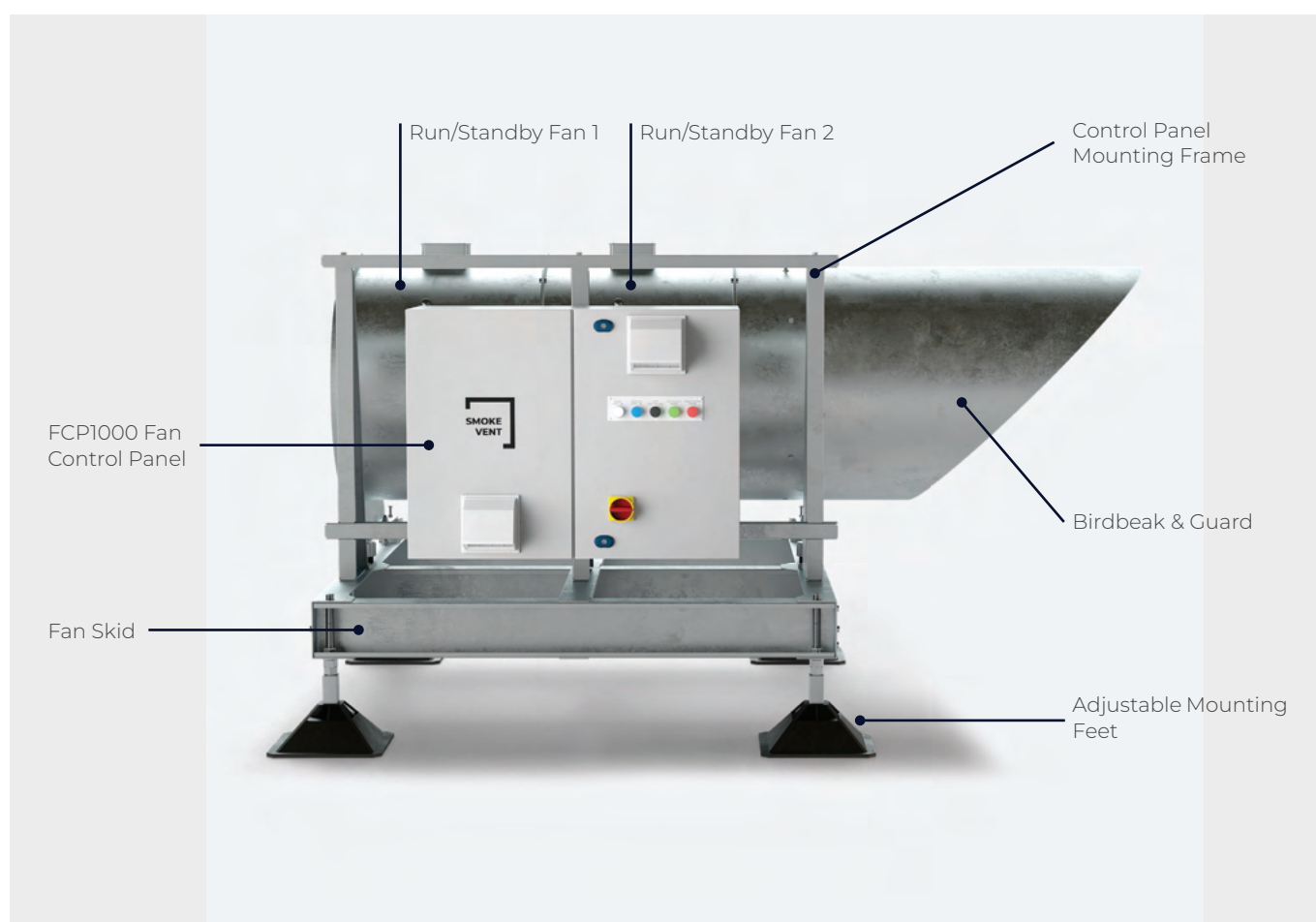
36

Controls

Single and multi-zone systems available as well as a new range of mechanical smoke ventilation products.

Product Overview

The mechanical smoke product range is designed to enhance safety and efficiency in building smoke management. This innovative lineup includes the FCP1000 fan control panel and TITAN7 dual fan set. These products can also be combined as part of a pre-fabricated solution.



Pre-Fabricated

The pre-fabricated design of the TITAN7 dual fan set not only streamlines the installation process but also significantly reduces on-site time. The unit is conveniently crane-friendly for rooftop placement and is engineered for quick and straightforward commissioning, ensuring it can be operational with minimal delay.



Fan Sizes

As standard the TITAN7 dual fan set is available with a 630mm or 710mm fan size and 5.5kW or 7.5kW motor.



Controls

Single & Multi-Zone control panels for natural smoke ventilation applications as well as mechanical smoke ventilation applications are available.

Accessories

A range of accessories are available for the smoke control product range including call points, HMI screens, smoke sensors, pressure switches, key switches and climate sensors.

Smoke Vents



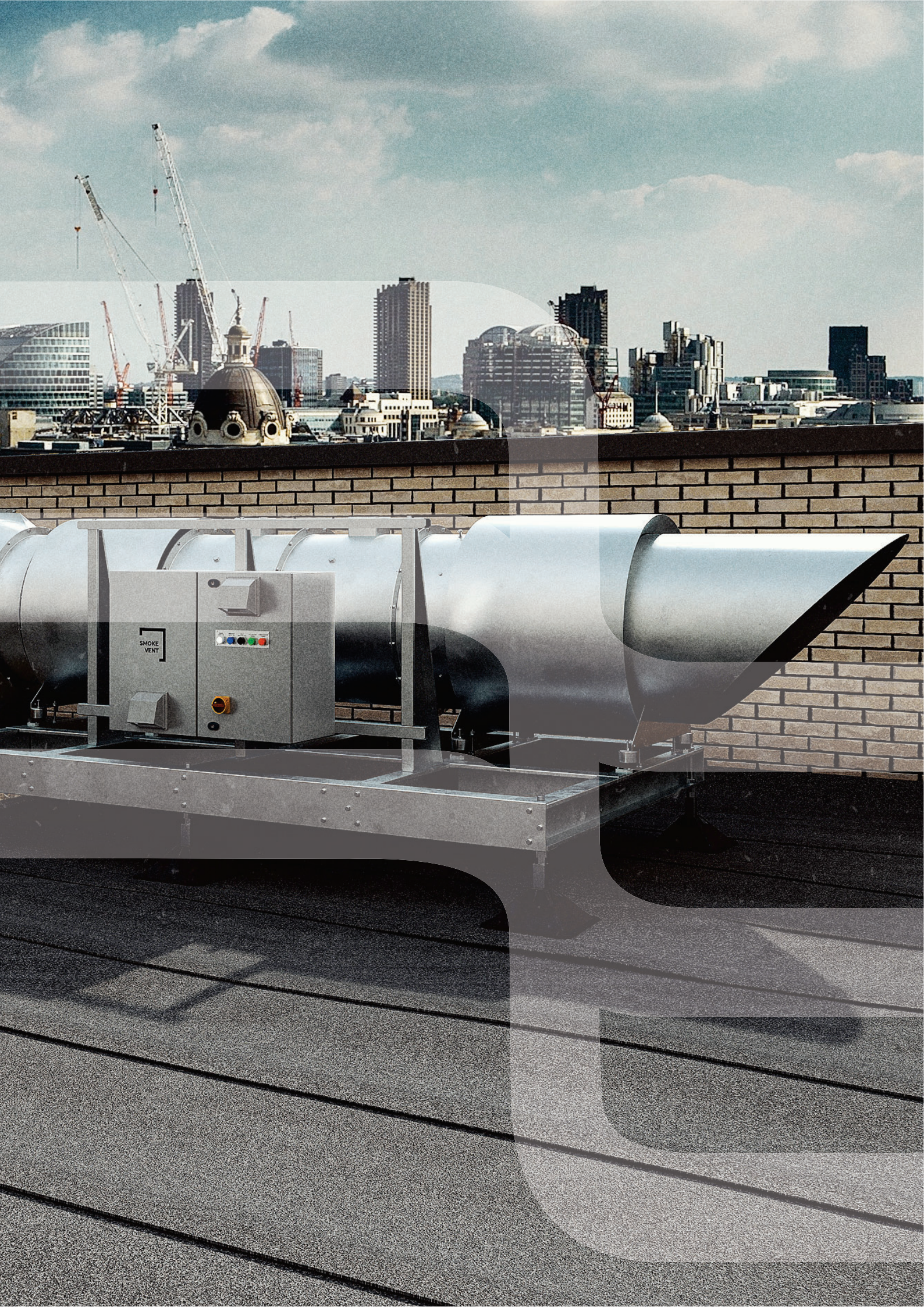
Facade Vents



Roof Vents



Smoke Shaft Vents



Fans



Fan Sets

- TITAN 7

TITAN 7

The TITAN 7 dual fan set is supplied pre-mounted on a skid for easy installation. Designed to enhance fire safety, this unit efficiently extracts smoke from buildings via an internal smoke shaft during a fire. The pre-fabricated design of the TITAN 7 dual fan set not only streamlines the installation process but also significantly reduces on-site time.

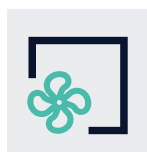


Controls

The TITAN 7 dual fan set can be supplied with a pre-fitted FCP1000 control unit, further simplifying and accelerating on-site commissioning.



Application



Mechanical
Ventilation

Pre-Fab Options

- F1 = Dual smoke extract fan on skid.
- F2 = Dual smoke extract fan on skid with control panel mounting frame.
- F3 = Dual smoke extract fan on skid with control panel mounting frame and FCP1000 control unit.

Part Codes

TITAN7-M5-F1	TITAN 7 Dual Fan Set 710mm 5.5kW 400Pa on F1 Pre-Fab Assembly
TITAN7-M5-F2	TITAN 7 Dual Fan Set 710mm 5.5kW 400Pa on F2 Pre-Fab Assembly
TITAN7-M5-F3-G5	TITAN 7 Dual Fan Set 710mm 5.5kW 400Pa & FCP1000-G5 Fan Control Panel on F3 Pre-Fab Assembly
TITAN7-M7-F1	TITAN 7 Dual Fan Set 710mm 7.5kW 600Pa on F1 Pre-Fab Assembly
TITAN7-M7-F2	TITAN 7 Dual Fan Set 710mm 7.5kW 600Pa on F2 Pre-Fab Assembly
TITAN7-M7-F3-G7	TITAN 7 Dual Fan Set 710mm 7.5kW 600Pa & FCP1000-G7 Fan Control Panel on F3 Pre-Fab Assembly

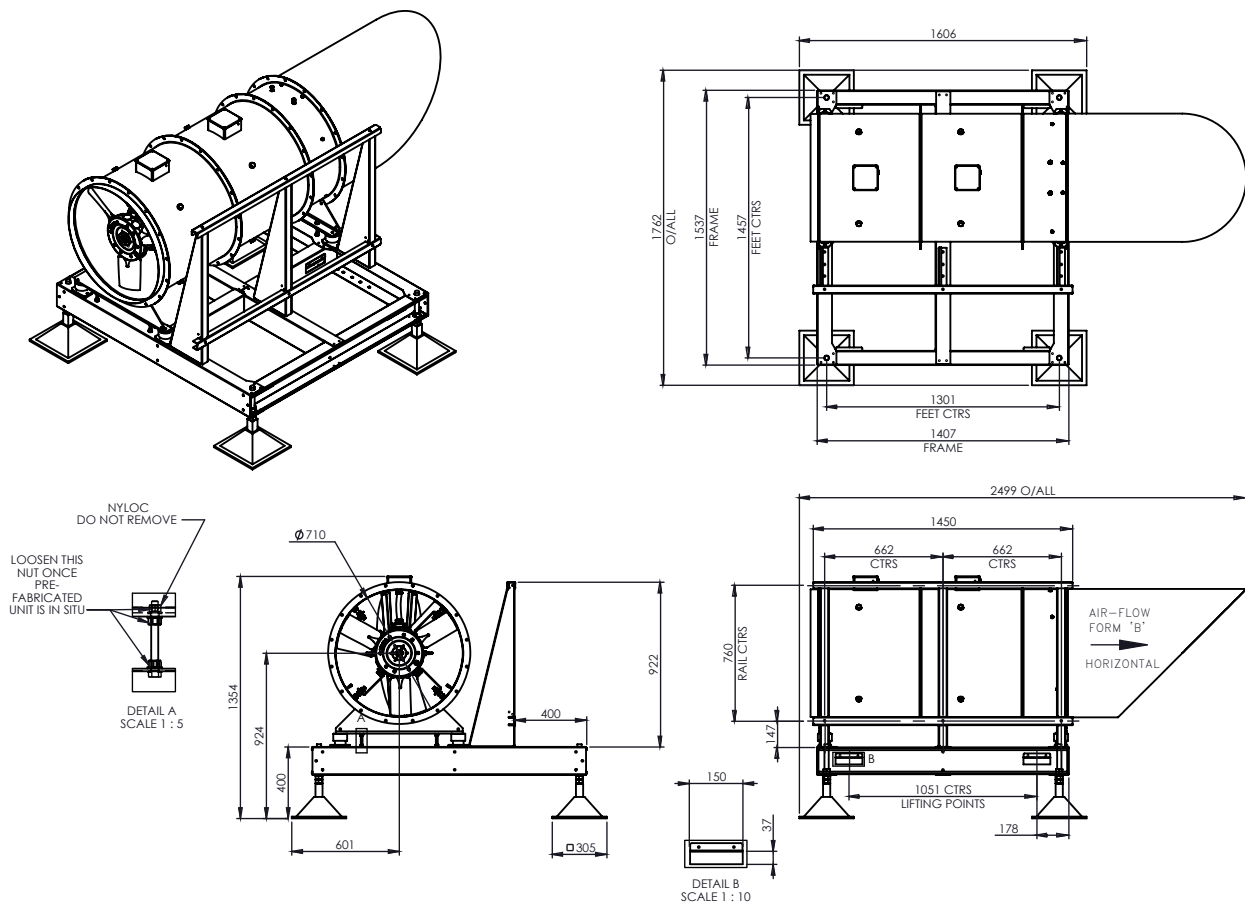
Item Code Composition:

1	Fan Type 710mm	= TITAN7
2	Motor Type 5.5kW 7.5kW	= M5 = M7
3	Pre-Fab Frame Type Standard Skid Skid & Control Panel Mounting Frame Skid, Control Panel Mounting Frame & Fan Control Panel	= F1 = F2 = F3
4	Fan Control Panel Type FCP1000-G5 (5.5kW) FCP1000-G7 (7.5kW)	= G5 = G7

Technical Data

	TITAN7-M5	TITAN7-M7
Voltage	400V 3ph 50Hz	400V 3ph 50Hz
Current Consumption	5.5kW	7.5kW
Fan Speed	2880 r/min	2880 r/min
Diameter	710mm	710mm
Hub Size	181mm	251mm
Impeller	Axial, Aluminium	Axial, Aluminium
Extract Rate	6.00 m³/s	6.00 m³/s
Static Pressure	400Pa	600Pa
Temp Rating	F300 for 2hrs EN12101-3	F300 for 2hrs EN12101-3

Dimensions



The above drawing dimensions illustrate a typical TITAN7-M5-F2 dual fan set.

For accurate drawings please contact our sales team.

Frame Types



F1

Dual fan set on skid.



F2

Dual fan set on skid with control panel mounting frame.



F3

Dual fan set on skid with control panel mounting frame and FCP1000 control unit.

Compatible Controls



FCP1000

Control Unit



Smoke Vents



Facade

- SV-W-GL1
- SV-W-L1
- SV-W-W1
- SV-W-W2



Roof

- SV-R-CP2
- SV-R-GL1
- SV-R-L4
- SV-R-RL1



Smoke Shaft

- SV-W-D2
- SV-W-D5

Sizes	800x2000mm 1000x2000mm 1200x1200mm Bespoke
Free Area	1m ² or 1.5m ²

Products / Smoke Vents / Facade

SV-W-GL1

The SV-W-GL1 Louvre Window is preferred by many clients due to its outstanding advantages in regard to ventilation, weather tightness and thermal protection, as well as a high degree of security (burglar proof RC2). The glass louvres are framed with aluminium profiles.



Blades

Double or triple insulation glass (glass thickness 28 mm or 32 mm). Various combinations of glass with regard to thermal insulation or protection. Sandwich panels in various combinations also available.



Certification

Certified and tested in accordance to EN 12101-2



Applications

- End of Corridor
- Head of Stairwell

Part Codes

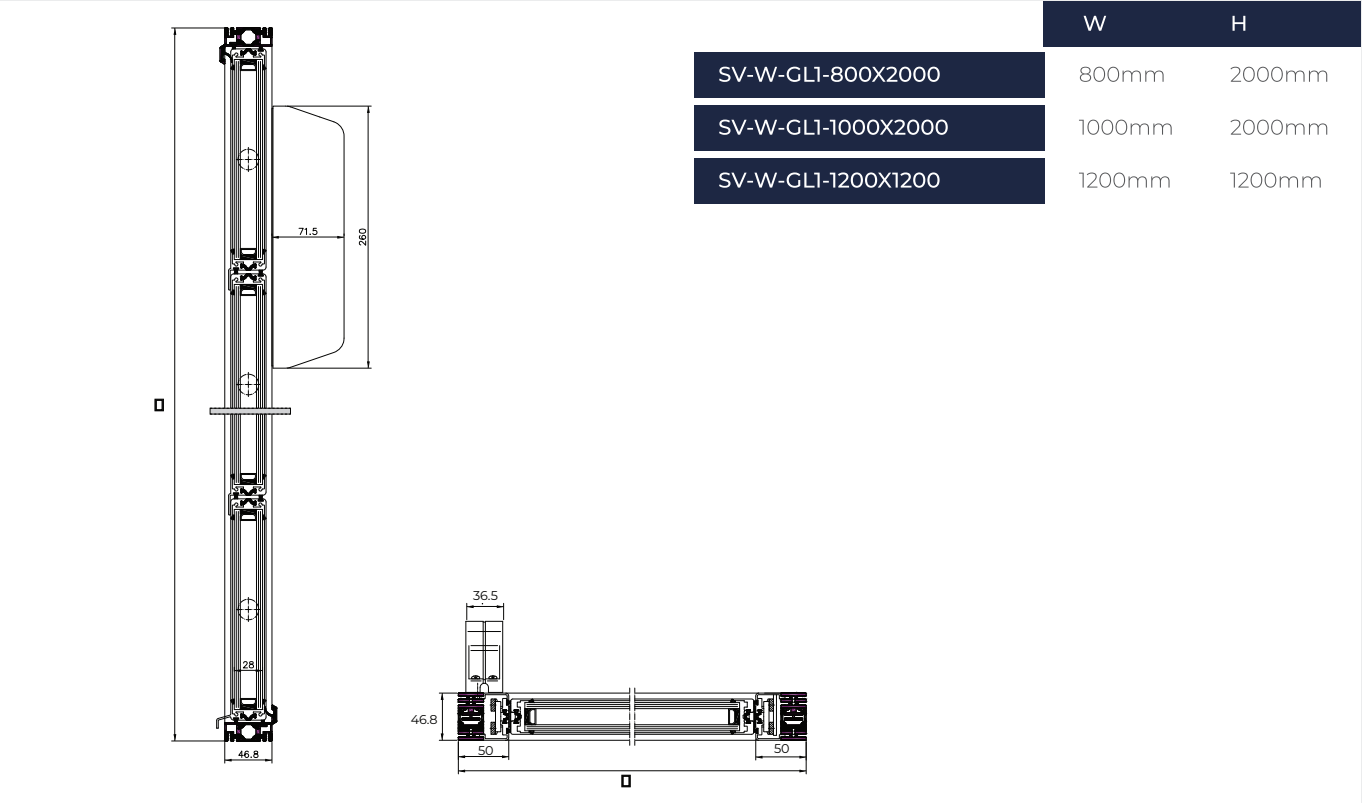
SV-W-GL1-800X2000	AOV Glazed Wall Louvre 800x2000mm 1.19m ²
SV-W-GL1-1000X2000	AOV Glazed Wall Louvre 1000x2000mm 1.54m ²
SV-W-GL1-1200X1200	AOV Glazed Wall Louvre 1200x1200mm 1.08m ²

* Alternative sizes are available

Technical Data

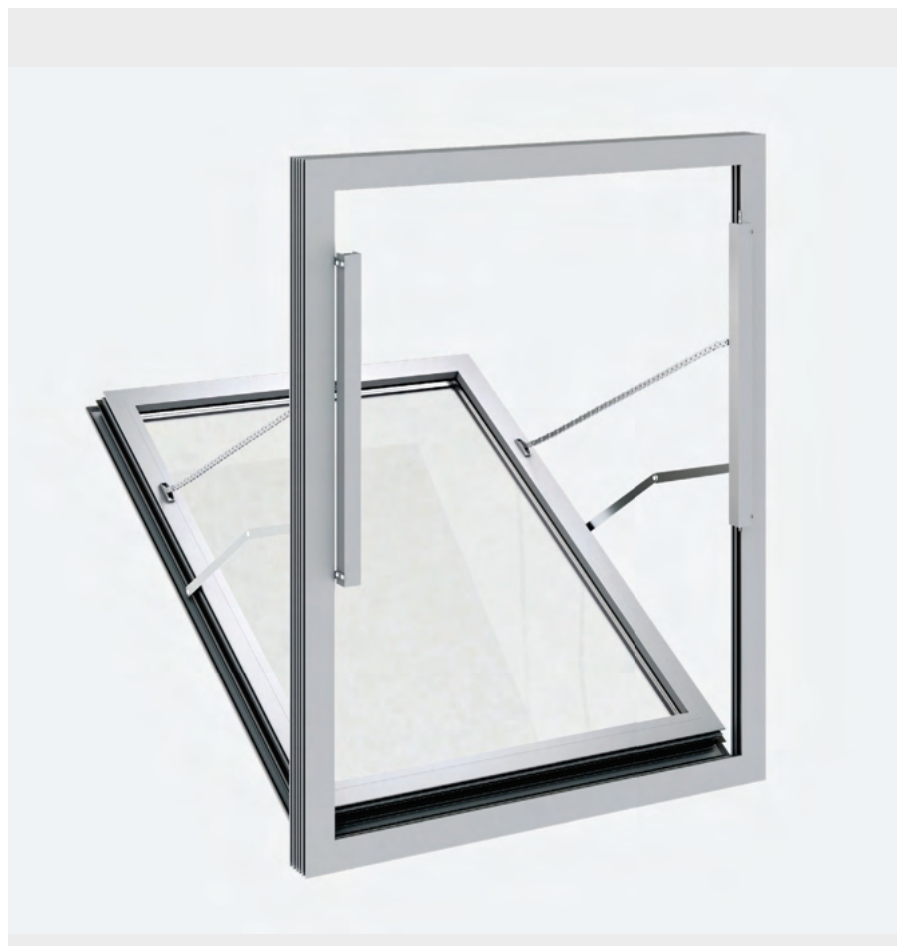
Frame	Aluminium profiles, thermal broken
Blades	Insulated glass Solid infill
Geometric Free Area	1m ² or 1.5m ² (depending on vent size)
Voltage	24V DC
Opening	84°
Opening Speed	> 60 secs
Current Consumption	0.7 Amp
Colour	Custom RAL colour
Certification	EN 12101-2
Cable Dimension	2-Core
Delivery Includes	1 x Vent & 1 x Actuator

Dimensions



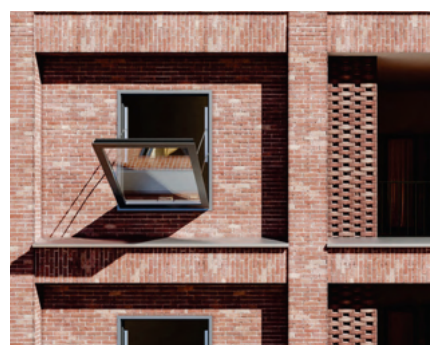
SV-W-W1

SV-W-W1 AOV bottom hung window's are used as part of a natural smoke ventilation system. The main function of smoke exhaust windows is to remove smoke from communal areas such as lobbies and/or stairwells.



Design

Actuator type and opening angle and direction appropriately selected to meet required free area(s).



Certification

Certified and tested in accordance to EN 12101-2



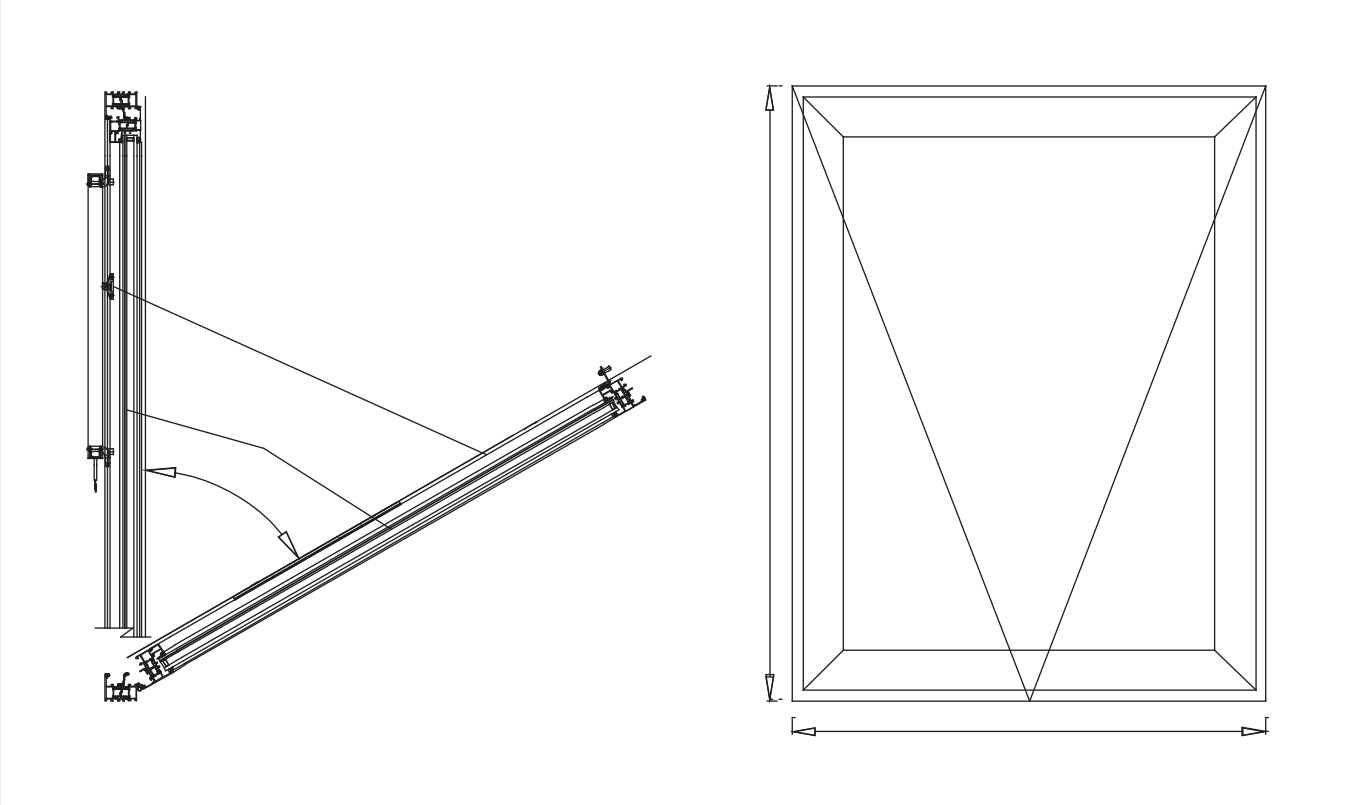
Applications

- End of Corridor
- Head of Stairwell

Technical Data

Frame	Aluminium
Glass	Double Glazed (Standard) or Triple Glazed
Geometric Free Area	1m ² or 1.5m ² (depending on vent size)
Voltage	24V DC
Opening	40-60°
Opening Speed	> 60 secs
Current Consumption	2 - 5.2 Amp (depending on vent size)
Colour	Custom RAL colour
Certification	EN 12101-2
Cable Dimension	2-Core
Delivery Includes	1 x Vent & 2 x Actuators

Dimensions



Sizes	800x2000mm 1000x2000mm 1200x1200mm Bespoke
Free Area	1m ² or 1.5m ²

Products / Smoke Vents / Facade

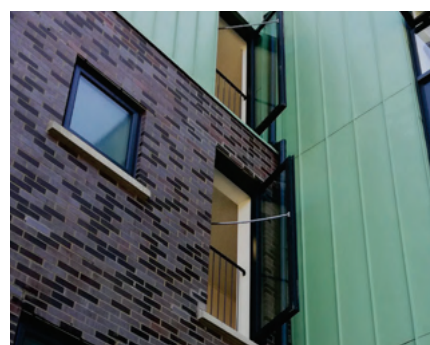
SV-W-W2

SV-W-W2 AOV side hung window's are used as part of a natural smoke ventilation system. The main function of smoke exhaust windows is to remove smoke from communal areas such as lobbies and/or stairwells.



Design

Actuator type and opening angle and direction appropriately selected to meet required free area(s).



Certification

Certified and tested in accordance to EN 12101-2



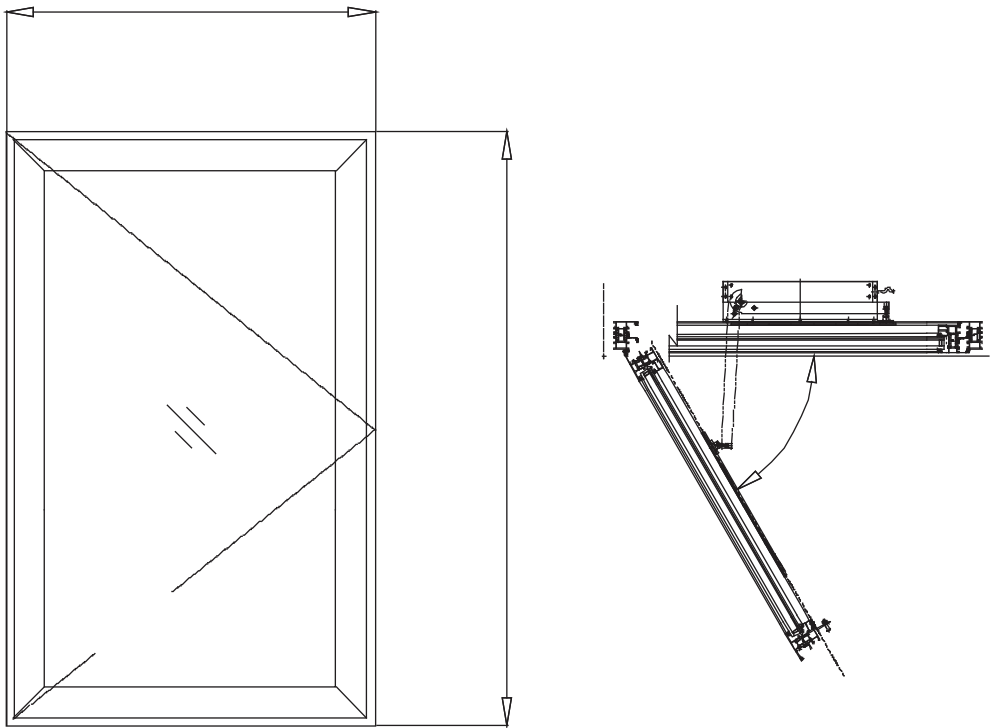
Applications

- End of Corridor
- Head of Stairwell

Technical Data

Frame	Aluminium
Glass	Double Glazed (Standard) or Triple Glazed
Geometric Free Area	1m ² or 1.5m ² (depending on vent size)
Voltage	24V DC
Opening	90°
Opening Speed	> 60 secs
Current Consumption	2 Amp
Colour	Custom RAL Colour
Certification	EN 12101-2
Cable Dimension	2-Core
Delivery Includes	1 x Vent & 1 x Actuator

Dimensions



Sizes	780x1400mm 1140x1180mm 1340x1400mm
Free Area	1m ² or 1.5m ²

Products / Smoke Vents / Roof

SV-R-CP2

SV-R-CP2 AOV centre pivot window has been designed to swiftly dispel excess heat and smoke. In only a minute, it can fully open to the fire position once the smoke ventilation system is activated. It has been extensively tested and adheres to all EU requirements.



Glass

With triple glazing this sloping roof window has been made with your wellbeing in mind as it reduces outside noise while maintaining a cosy and warm atmosphere.



Certification

Certified and tested in accordance to EN 12101-2



Applications

- Head of Smoke Shaft
- Head of Stairwell

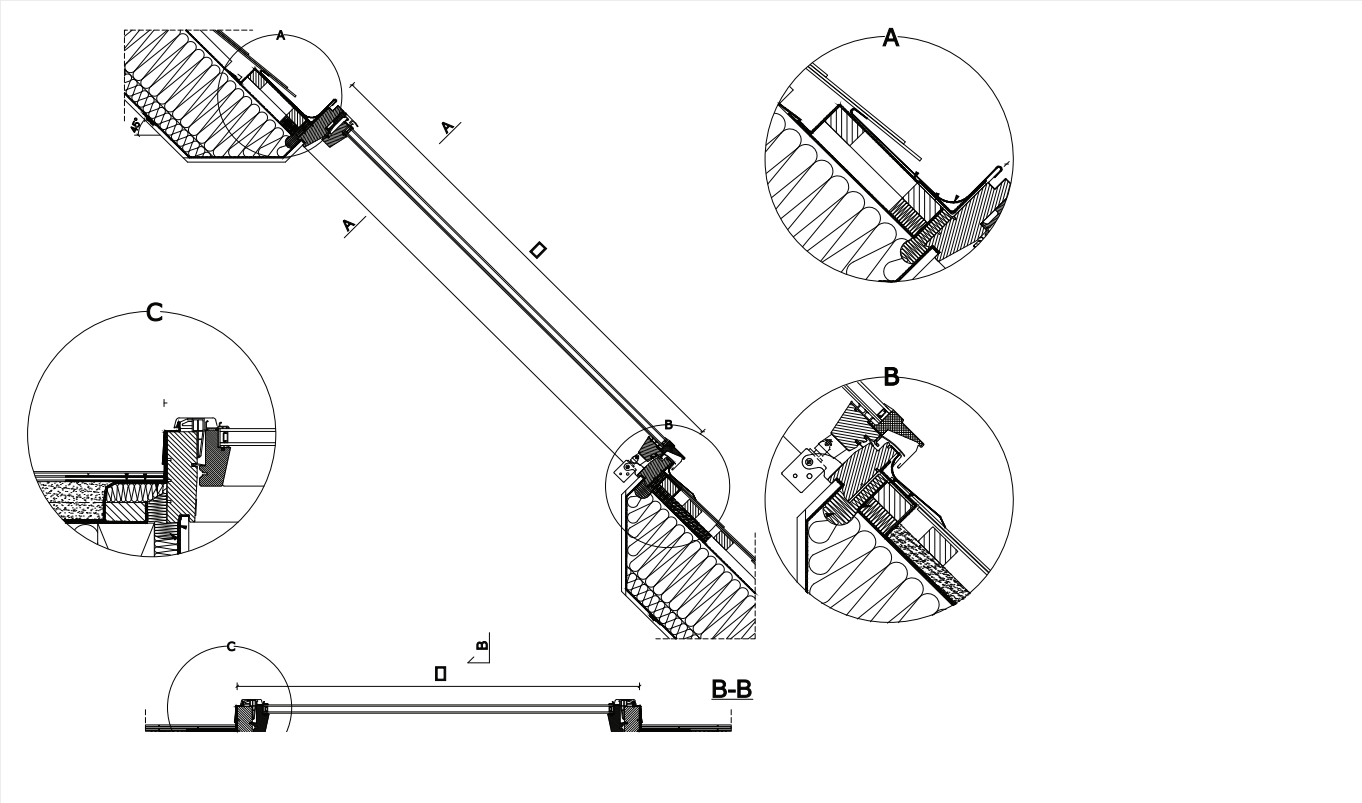
Part Codes

SV-R-CP2-780X1400	AOV Centre Pivot Roof Window 780x1400mm 0.9m²
SV-R-CP2-1140X1180	AOV Centre Pivot Roof Window 1140x1180mm 1m²
SV-R-CP2-1340X1400	AOV Centre Pivot Roof Window 1340x1400mm 1.5m²

Technical Data

Frame	Pinewood
Glass Construction	Outer pane = 4mm toughened glass, 14mm steel spacer filled with inert argon gas. 6.8mm internal pane is an anti-burglary class of laminate 33.2
Geometric Free Area	1m² or 1.5m² (depending on vent size)
Voltage	24V DC
Opening Speed	> 60 secs
Current Consumption	1.4 Amp
Colour	Internal = White White / External = Anthracite
Certification	EN 12101-2
Delivery Includes	1 x Vent & 1 x Actuator
Cable Dimension	2-Core

Dimensions

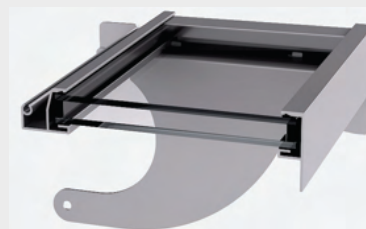


Sizes	1186x1186mm 966x1600mm 966x1800mm Bespoke
Free Area	1m ² or 1.5m ²

Products / Smoke Vents / Roof

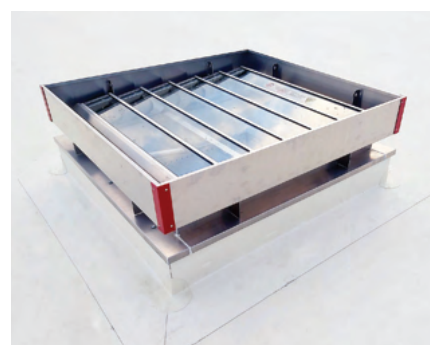
SV-R-GL1

The SV-R-GL1 AOV glazed roof louvre is a multi louvred ventilator that provides an economic method of ventilation, allowing the removal of large quantities of warm air and/or smoke from a building within a short period of time.



Blades

Double insulated aluminium as standard. Can also be supplied in polycarbonate (16mm or 25mm) or glass (single or glass).



Certification

Certified and tested in accordance to EN 12101-2



Applications

- Head of Smoke Shaft
- Head of Stairwell

Part Codes

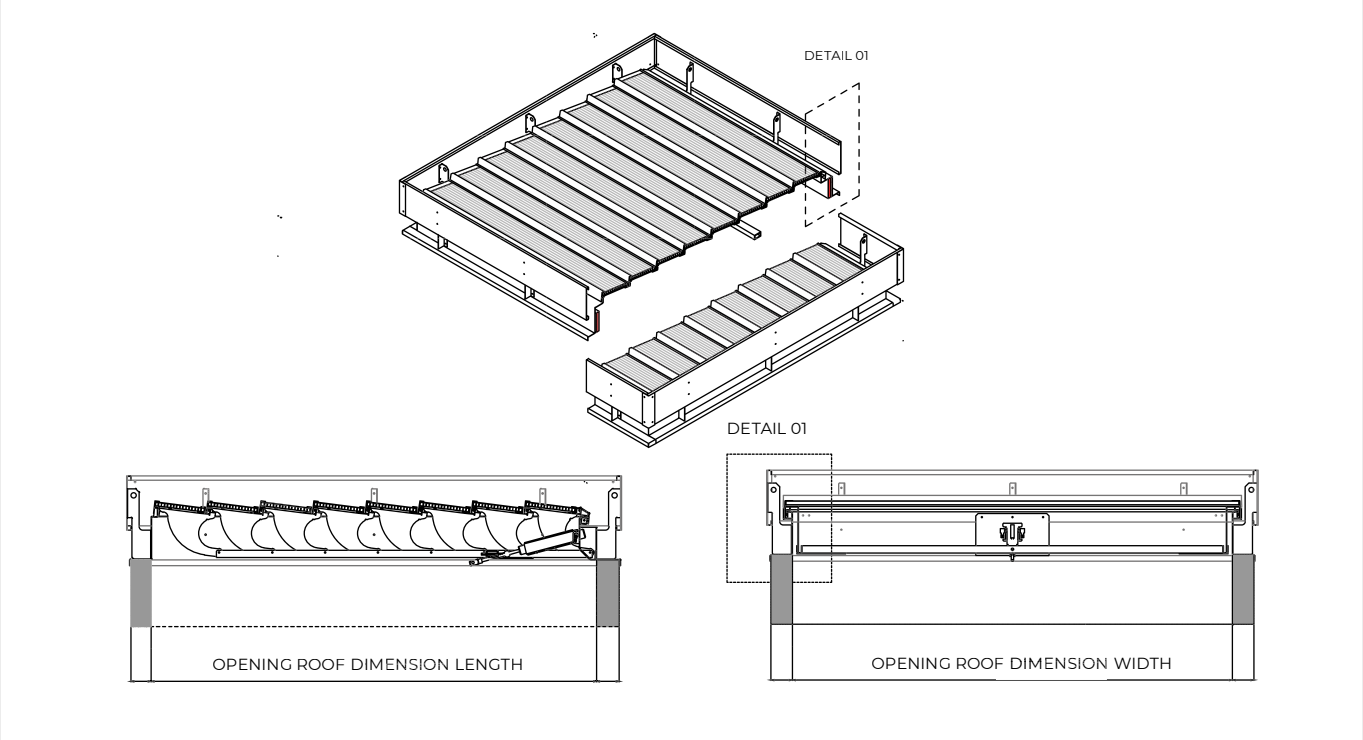
SV-R-GL1-1186X1186	AOV Roof Louvre 1186x1186mm 1m ²
SV-R-GL1-966X1600	AOV Roof Louvre 966x1600mm 1.55m ²
SV-R-GL1-966X1800	AOV Roof Louvre 966x1800mm 1.74m ²

* Alternative sizes are available

Technical Data

Blades	Insulated double glass 25 mm (Standard) / Polycarbonate blades / Sandwich panel
Geometric Free Area	1m ² or 1.5m ² (depending on vent size)
U Value	Overall 'U' Value 1.75 W/m ² K
Voltage	24V DC
Opening	90°
Opening Speed	> 60 secs
Current Consumption	1 Amp
Colour	Mill Finish / Powder Coated
Certification	EN 12101-2
Cable Dimension	2-Core
Delivery Includes	1 x Vent & 1 x Actuator

Dimensions



Sizes	966x1500mm 966x1800mm 1186x1186mm Bespoke
Free Area	1m ² or 1.5m ²

Products / Smoke Vents / Roof

SV-R-L4

The SV-R-L4 AOV roof louvre is a multi louvred ventilator that provides an economic method of ventilation, allowing the removal of large quantities of warm air and/or smoke from a building within a short period of time.



Blades

Double insulated aluminium as standard. Can also be supplied in polycarbonate (16mm or 25mm) or glass (single or glass).



Certification

Certified and tested in accordance to EN 12101-2



Applications

- Head of Smoke Shaft
- Head of Stairwell

Part Codes

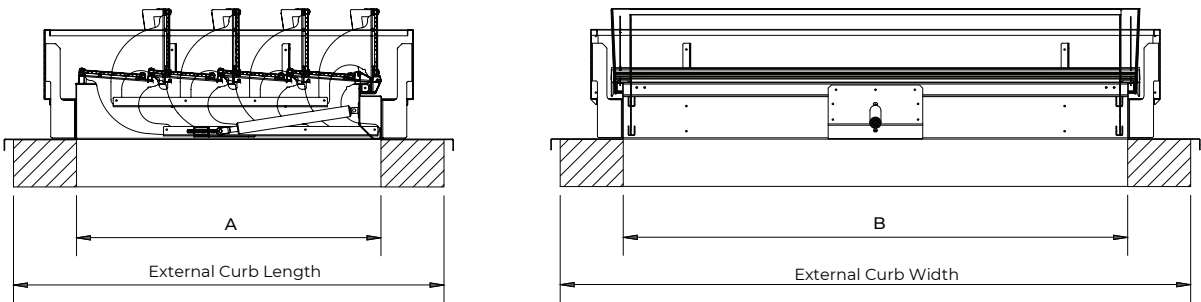
SV-R-L4-1186X1186	AOV Roof Louvre 1186x1186mm 1m ²
SV-R-L4-966X1500	AOV Roof Louvre 966x1500mm 1.09m ²
SV-R-L4-966X1800	AOV Roof Louvre 966x1800mm 1.31m ²

* Alternative sizes are available

Technical Data

Blades	Solid insulated aluminium blades (Standard) / Polycarbonate blades / Glass blades
Geometric Free Area	1m ² or 1.5m ² (depending on vent size)
U Value	Overall 'U' Value 1.75 W/m ² K
Voltage	24V DC
Opening	90°
Opening Speed	> 60 secs
Current Consumption	1 Amp
Colour	Mill Finish / Powder Coated
Certification	EN 12101-2
Cable Dimension	2-Core
Delivery Includes	1 x Vent & 1 x Actuator

Dimensions

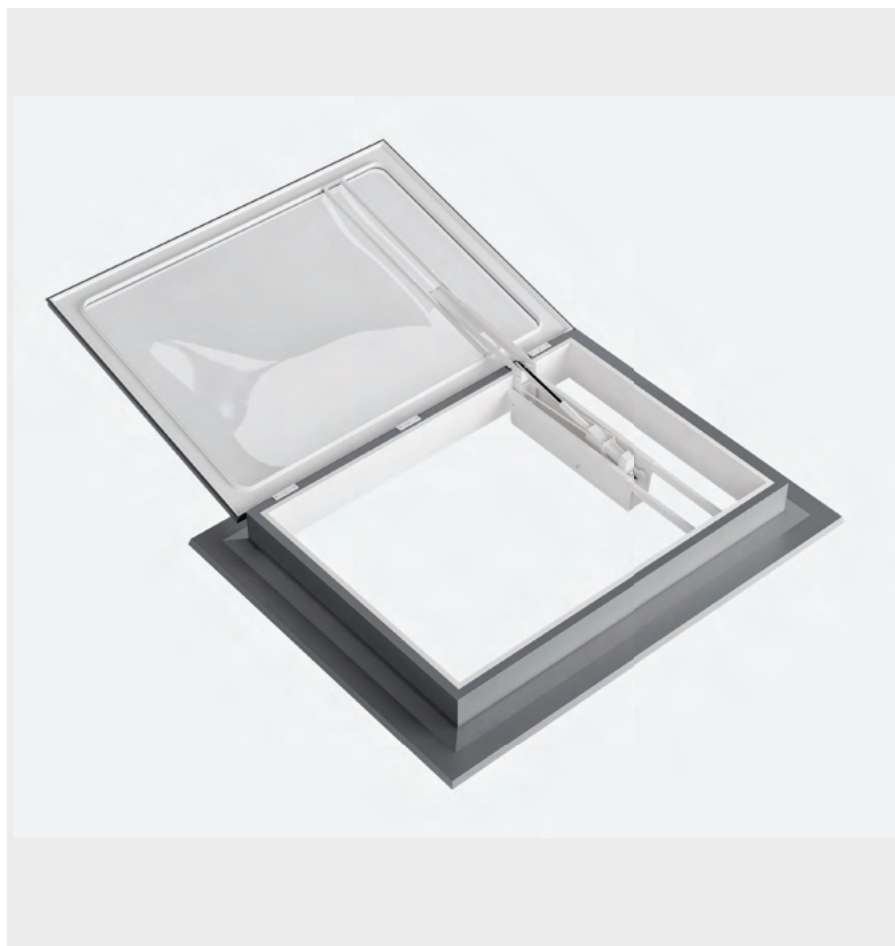


Sizes	1050x1050mm 1200x1200mm
	1000x1600mm Bespoke
Free Area	1m ² or 1.5m ²

Products / Smoke Vents / Roof

SV-R-RL1

SV-R-RL1 AOV roof hatch units are principally designed for smoke and heat ventilation in protected stairwells and corridors within residential apartments, hotels, shops, and offices. Available as square, rectangular or circular.



Cover Lid

Available in polycarbonate single, double, triple or quad skin or with aluminium insulated solid cover. The aluminium insulated covers are available as mill finish or powder coated to any RAL colour.



Certification

Certified and tested in accordance to EN 12101-2



Applications

- Head of Smoke Shaft
- Head of Stairwell

Part Codes

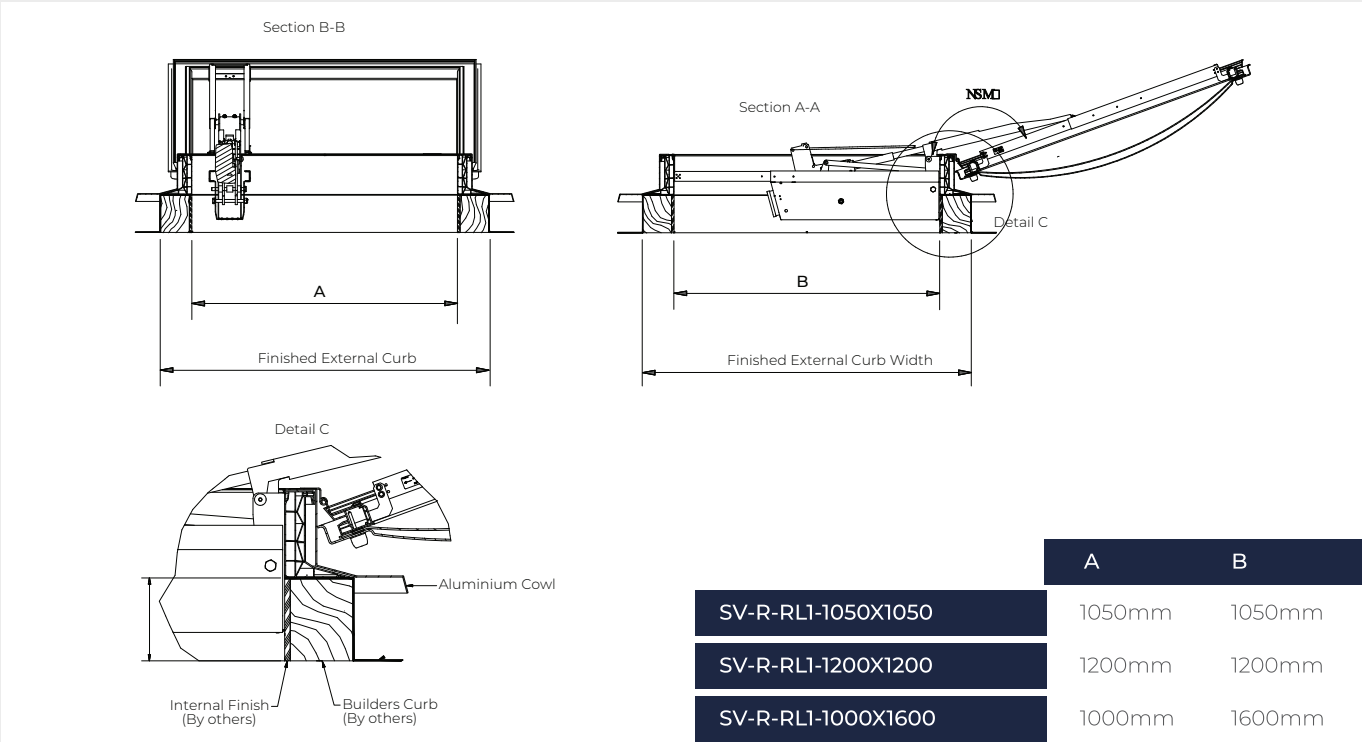
SV-R-RL1-1050X1050	AOV Roof Hatch Polycarbonate Dome 1050x1050mm 1.0m ²
SV-R-RL1-1200X1200	AOV Roof Hatch Polycarbonate Dome 1200x1200mm 1.4m ²
SV-R-RL1-1000X1600	AOV Roof Hatch Polycarbonate Dome 1000x1600mm 1.6m ²

* Alternative sizes are available

Technical Data

Upstand	uPVC 150mm vertical upstand
Lid	Polycarbonate (clear or opal) or Aluminium
Geometric Free Area	1m ² or 1.5m ² (depending on vent size)
U Value	Supplied as standard with double skin polycarbonate lid = 2.6W/(m2.K)
Voltage	24V DC
Opening	160°
Opening Speed	> 60 secs
Current Consumption	4 Amp
Colour	Mill Finish (external) and White (internal)
Certification	EN 12101-2
Cable Dimension	2-Core
Delivery Includes	1 x Vent & 1 x Actuator

Dimensions



SV-W-D2

AOV Smoke shaft damper designed specifically for shaft smoke control systems to meet the current standard BS EN 121010-8. The 26SSD has been fully tested to the requirements of the product standard to BS EN 1366-10 for Automatic Activation Systems and is a multi compartment damper being tested to BS EN 1366-2 in both directions.



Quality

Under the tests completed the damper will maintain its position in the open for two hours and remain closed for two hours. The 26SSD combination unit is suitable for system pressures up to 500Pa positive or negative.



Certification

Certified and tested in accordance to EN 12101-8



Applications

- Smoke Shaft

Part Codes

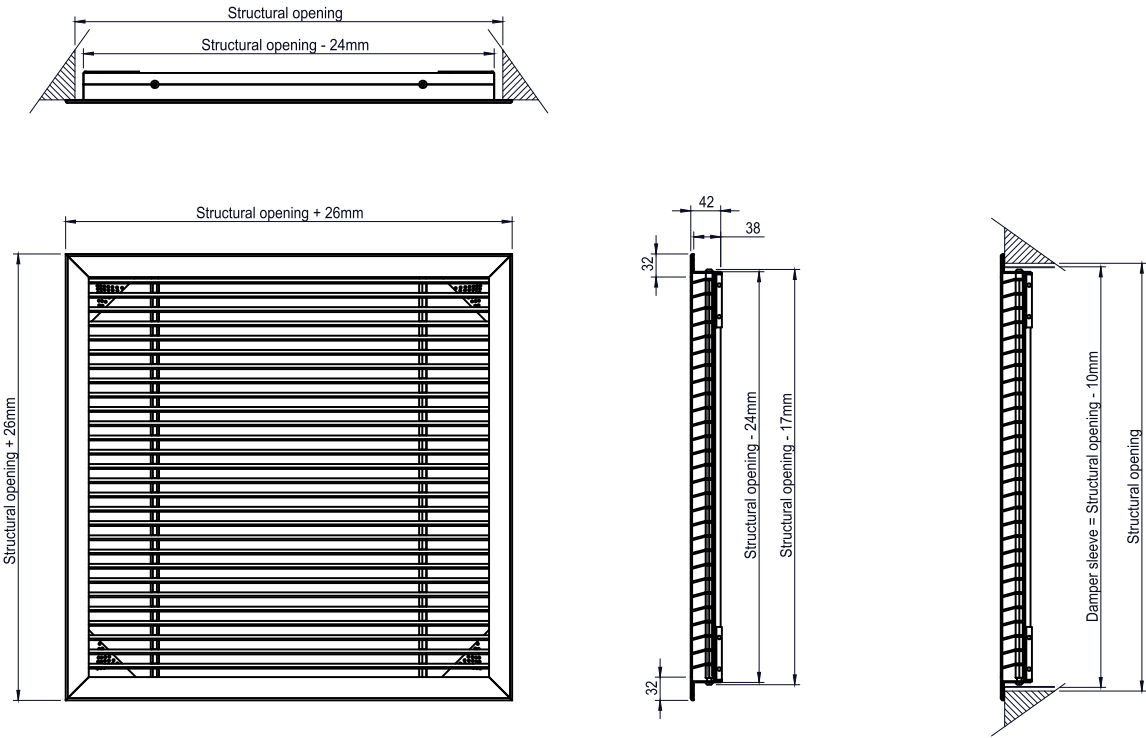
SV-W-D2-850X1918	AOV Smoke Damper 850x1918mm 1m²
------------------	---------------------------------

* Alternative sizes are available

Technical Data

Frame	Galvanised steel construction
Blades	Extruded Aluminium
Geometric Free Area	0.6m² or 1m² (depending on vent size)
Voltage	24V DC
Opening	40°
Opening Speed	> 60 secs
Current Consumption	0.3 Amp
Colour	Mill Finish (damper) and White (cover grille)
Certification	EN 12101-8
Cable Dimension	3-Core
Delivery Includes	1 x Vent & 1 x Actuator

Dimensions



SV-W-D5

The SV-W-D5 smoke damper has been designed for smoke evacuation and control within lobbies and are installed into extract shafts in multi-level buildings, to maintain tenable conditions in the common escape routes in the event of a fire. The dampers are designed to work in fan power extract systems. Air is pulled through the damper and into the extract shaft.



Blades

0.7mm galvanised (BS EN10346 DX-51D+Z275) double skin matt black painted aerofoil 100mm pitch damper blades which interlock when closed.



Actuator Recess

Actuator is on lobby side, concealed from view behind a black painted removable cover and can be manually operated if required.

Application



Mechanical
Ventilation

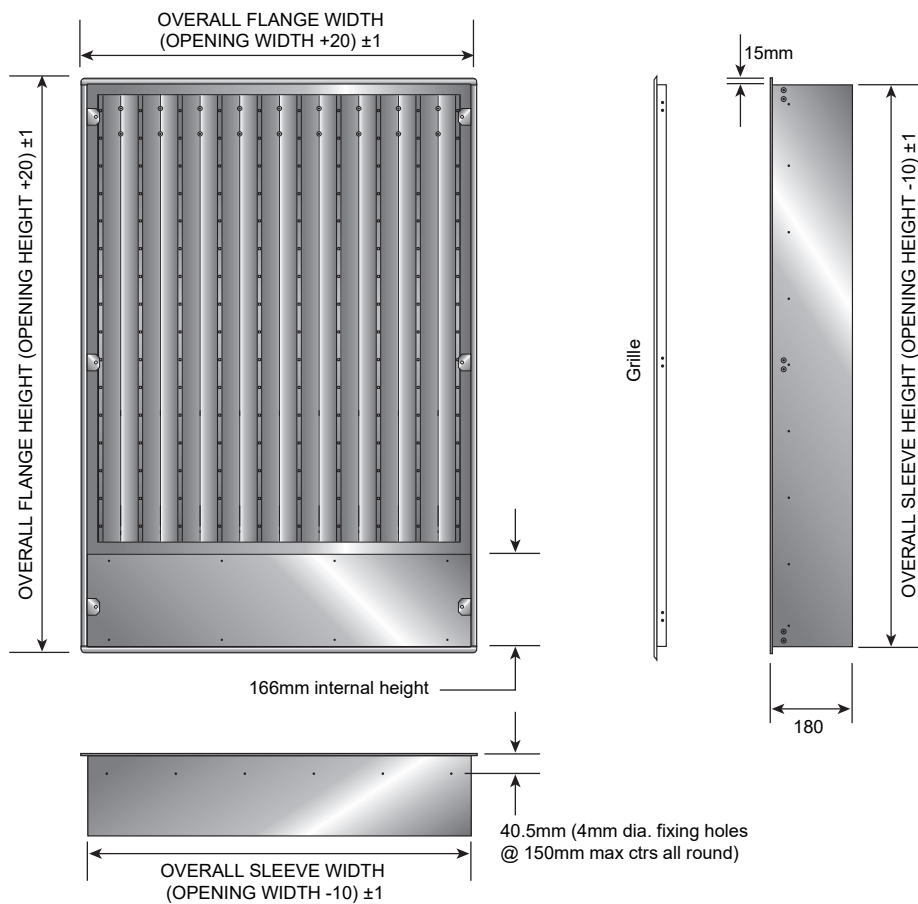
Part Codes

SV-W-D5-400X600	SV-W-D5 Mechanical Smoke Damper with Grille 400mm (w) x 600mm (h) 0.06m ²
SV-W-D5-400X700	SV-W-D5 Mechanical Smoke Damper with Grille 400mm (w) x 700mm (h) 0.08m ²
SV-W-D5-400X800	SV-W-D5 Mechanical Smoke Damper with Grille 400mm (w) x 800mm (h) 0.11m ²
SV-W-D5-400X900	SV-W-D5 Mechanical Smoke Damper with Grille 400mm (w) x 900mm (h) 0.13m ²
SV-W-D5-400X1000	SV-W-D5 Mechanical Smoke Damper with Grille 400mm (w) x 1000mm (h) 0.16m ²
SV-W-D5-400X1100	SV-W-D5 Mechanical Smoke Damper with Grille 400mm (w) x 1100mm (h) 0.18m ²
SV-W-D5-400X1200	SV-W-D5 Mechanical Smoke Damper with Grille 400mm (w) x 1200mm (h) 0.21m ²
SV-W-D5-400X1300	SV-W-D5 Mechanical Smoke Damper with Grille 400mm (w) x 1300mm (h) 0.23m ²
SV-W-D5-400X1400	SV-W-D5 Mechanical Smoke Damper with Grille 400mm (w) x 1400mm (h) 0.25m ²
SV-W-D5-400X1425	SV-W-D5 Mechanical Smoke Damper with Grille 400mm (w) x 1425mm (h) 0.26m ²
SV-W-D5-500X600	SV-W-D5 Mechanical Smoke Damper with Grille 500mm (w) x 600mm (h) 0.11m ²
SV-W-D5-500X700	SV-W-D5 Mechanical Smoke Damper with Grille 500mm (w) x 700mm (h) 0.14m ²
SV-W-D5-500X800	SV-W-D5 Mechanical Smoke Damper with Grille 500mm (w) x 800mm (h) 0.17m ²
SV-W-D5-500X900	SV-W-D5 Mechanical Smoke Damper with Grille 500mm (w) x 900mm (h) 0.20m ²
SV-W-D5-500X1000	SV-W-D5 Mechanical Smoke Damper with Grille 500mm (w) x 1000mm (h) 0.23m ²
SV-W-D5-500X1100	SV-W-D5 Mechanical Smoke Damper with Grille 500mm (w) x 1100mm (h) 0.27m ²
SV-W-D5-500X1200	SV-W-D5 Mechanical Smoke Damper with Grille 500mm (w) x 1200mm (h) 0.30m ²
SV-W-D5-500X1300	SV-W-D5 Mechanical Smoke Damper with Grille 500mm (w) x 1300mm (h) 0.33m ²
SV-W-D5-500X1400	SV-W-D5 Mechanical Smoke Damper with Grille 500mm (w) x 1400mm (h) 0.36m ²
SV-W-D5-500X1425	SV-W-D5 Mechanical Smoke Damper with Grille 500mm (w) x 1425mm (h) 0.37m ²
SV-W-D5-600X600	SV-W-D5 Mechanical Smoke Damper with Grille 600mm (w) x 600mm (h) 0.13m ²
SV-W-D5-600X700	SV-W-D5 Mechanical Smoke Damper with Grille 600mm (w) x 700mm (h) 0.17m ²
SV-W-D5-600X800	SV-W-D5 Mechanical Smoke Damper with Grille 600mm (w) x 800mm (h) 0.21m ²
SV-W-D5-600X900	SV-W-D5 Mechanical Smoke Damper with Grille 600mm (w) x 900mm (h) 0.25m ²
SV-W-D5-600X1000	SV-W-D5 Mechanical Smoke Damper with Grille 600mm (w) x 1000mm (h) 0.29m ²
SV-W-D5-600X1100	SV-W-D5 Mechanical Smoke Damper with Grille 600mm (w) x 1100mm (h) 0.33m ²
SV-W-D5-600X1200	SV-W-D5 Mechanical Smoke Damper with Grille 600mm (w) x 1200mm (h) 0.37m ²
SV-W-D5-600X1300	SV-W-D5 Mechanical Smoke Damper with Grille 600mm (w) x 1300mm (h) 0.41m ²
SV-W-D5-600X1400	SV-W-D5 Mechanical Smoke Damper with Grille 600mm (w) x 1400mm (h) 0.45m ²
SV-W-D5-600X1425	SV-W-D5 Mechanical Smoke Damper with Grille 600mm (w) x 1425mm (h) 0.46m ²
SV-W-D5-700X600	SV-W-D5 Mechanical Smoke Damper with Grille 700mm (w) x 600mm (h) 0.16m ²
SV-W-D5-700X700	SV-W-D5 Mechanical Smoke Damper with Grille 700mm (w) x 700mm (h) 0.21m ²
SV-W-D5-700X800	SV-W-D5 Mechanical Smoke Damper with Grille 700mm (w) x 800mm (h) 0.26m ²
SV-W-D5-700X900	SV-W-D5 Mechanical Smoke Damper with Grille 700mm (w) x 900mm (h) 0.30m ²

Technical Data

Frame	1.5mm galvanised steel
Blades	0.7mm galvanised double skin
Geometric Free Area	0.06 - 1.01m ² (depending on vent size)
Voltage	24V DC
Opening Speed	> 60 secs
Current Consumption	0.5 Amp
Certification	EN 12101-8
Cable Dimension	3-Core
Delivery Includes	1 x Vent, 1 x Cover Grille & 1 x Actuator

Dimensions





Controls



Fan Control Units

- FCP1000



Smoke Vent Control Units

- SCP
- WSC104
- CompactSmoke
- FlexiSmoke



Accessories

- ATS1
- BG1/S
- BG3/FOS
- BG4/FOS
- BG5/FOS
- BG6/FOS
- BG7/FOS
- CTS2
- DPS24
- HMI-SCP
- HMI-KNX
- PSP1
- RRTKEY
- S50
- SSR
- TS2
- WLA 330
- WLA 331
- WSK 501
- WSK 503

FCP1000

The FCP1000 Control Panel is a robust and reliable solution designed to manage and power mechanical fan units for smoke control in residential buildings. Engineered to activate and regulate fan systems in emergency situations, the FCP1000 ensures efficient smoke extraction, enhancing safety by maintaining clear escape routes.

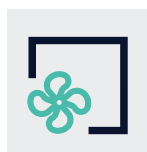


Network Features

The FCP1000 control panel can be networked with other units to form a multizone smoke control system, allowing precise, area-specific management of the smoke ventilation system.



Application



Mechanical
Ventilation

Pre-Fab Kit

The FCP1000 Control Panel is optionally available as a pre-fabricated kit, including a dual fan set and skid unit, for streamlined installation and optimal smoke control in residential buildings.

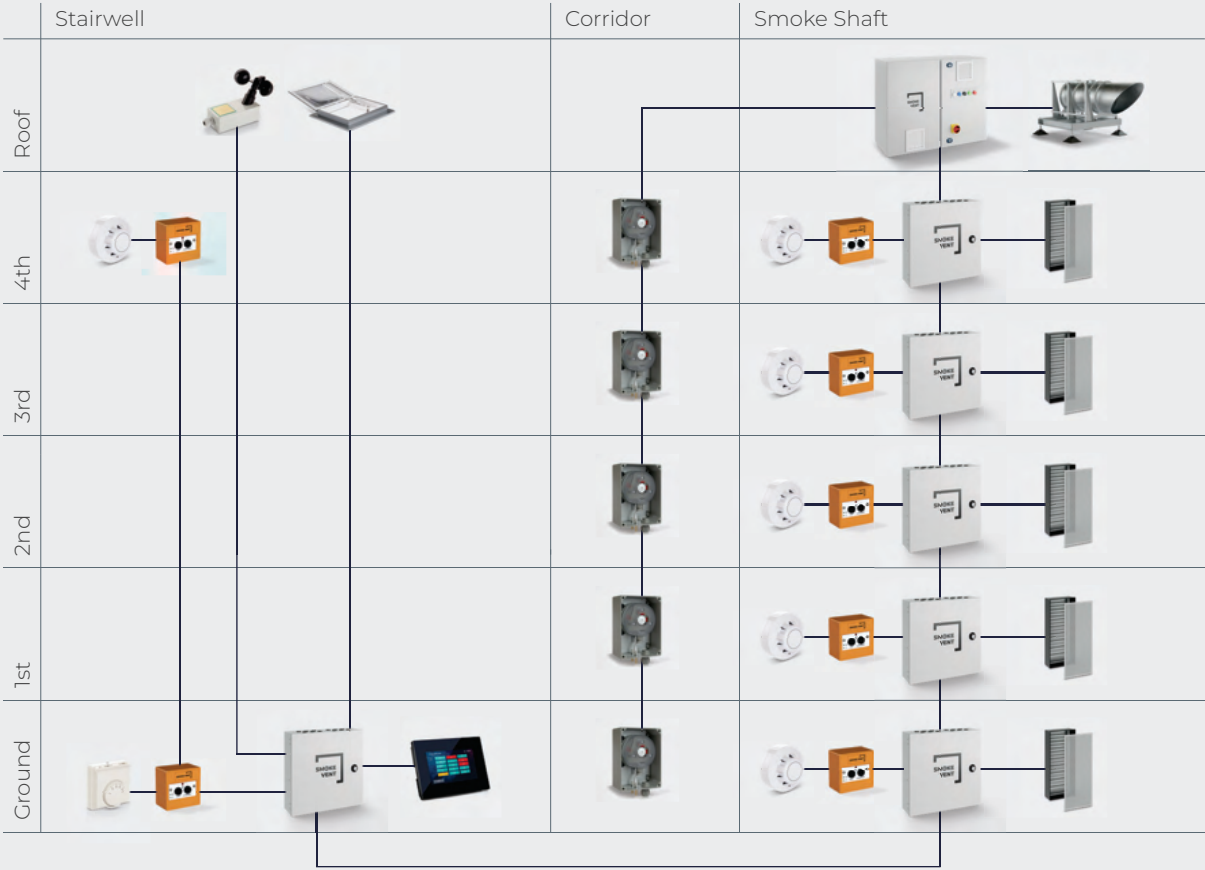
Part Codes

FCP1000-S5	FCP1000 Fan Control Panel with 2no. 5.5kW Inverters & Standard Enclosure
FCP1000-S7	FCP1000 Fan Control Panel with 2no. 7.5kW Inverters & Standard Enclosure
FCP1000-S11	FCP1000 Fan Control Panel with 2no. 11kW Inverters & Standard Enclosure
FCP1000-G5	FCP1000 Fan Control Panel with 2no. 5.5kW Inverters & GRP Enclosure
FCP1000-G7	FCP1000 Fan Control Panel with 2no. 7.5kW Inverters & GRP Enclosure
FCP1000-G11	FCP1000 Fan Control Panel with 2no. 11kW Inverters & GRP Enclosure

Technical Data	FCP1000-S* (Standard)	FCP1000-G* (External)
Primary Voltage (Input)	400V 3-phase 50Hz	400V 3-phase 50Hz
Secondary Voltage (Input)	400V 3-phase 50Hz	400V 3-phase 50Hz
Note	Primary and secondary supplies from BS EN 60947-6-1 ATS sited in same fire zone as fan panel.	Primary and secondary supplies from BS EN 60947-6-1 ATS sited in same fire zone as fan panel.
Fan Supply Power	FCP1000-S5 = 5.5kW FCP1000-S7 = 7.5kW FCP1000-S11 = 11kW	FCP1000-G5 = 5.5kW FCP1000-G7 = 7.5kW FCP1000-G11 = 11kW
Number of Fan Outputs	2 for both duty and standby fans	2 for both duty and standby fans
Control Inputs For (24V)	Fire, Pressure Transducer or Boost, Comfort	Fire, Pressure Transducer or Boost, Comfort
Control Outputs For (Volt-Free)	Duty Inverter Fault, Standby Inverter Fault, Primary Supply Fail, Secondary Supply Fail, System Running	Duty Inverter Fault, Standby Inverter Fault, Primary Supply Fail, Secondary Supply Fail, System Running
Enclosure Type	Mild-Steel	GRP
Enclosure Size	800mm (w) x 1000mm (h) x 300mm (d)	810mm (w) x 1055mm (h) x 350mm (d)
Protection Type	IP55	IP65
Cable Entry	Bottom	Bottom
Positioning	Internal mounting	Internal or external mounting

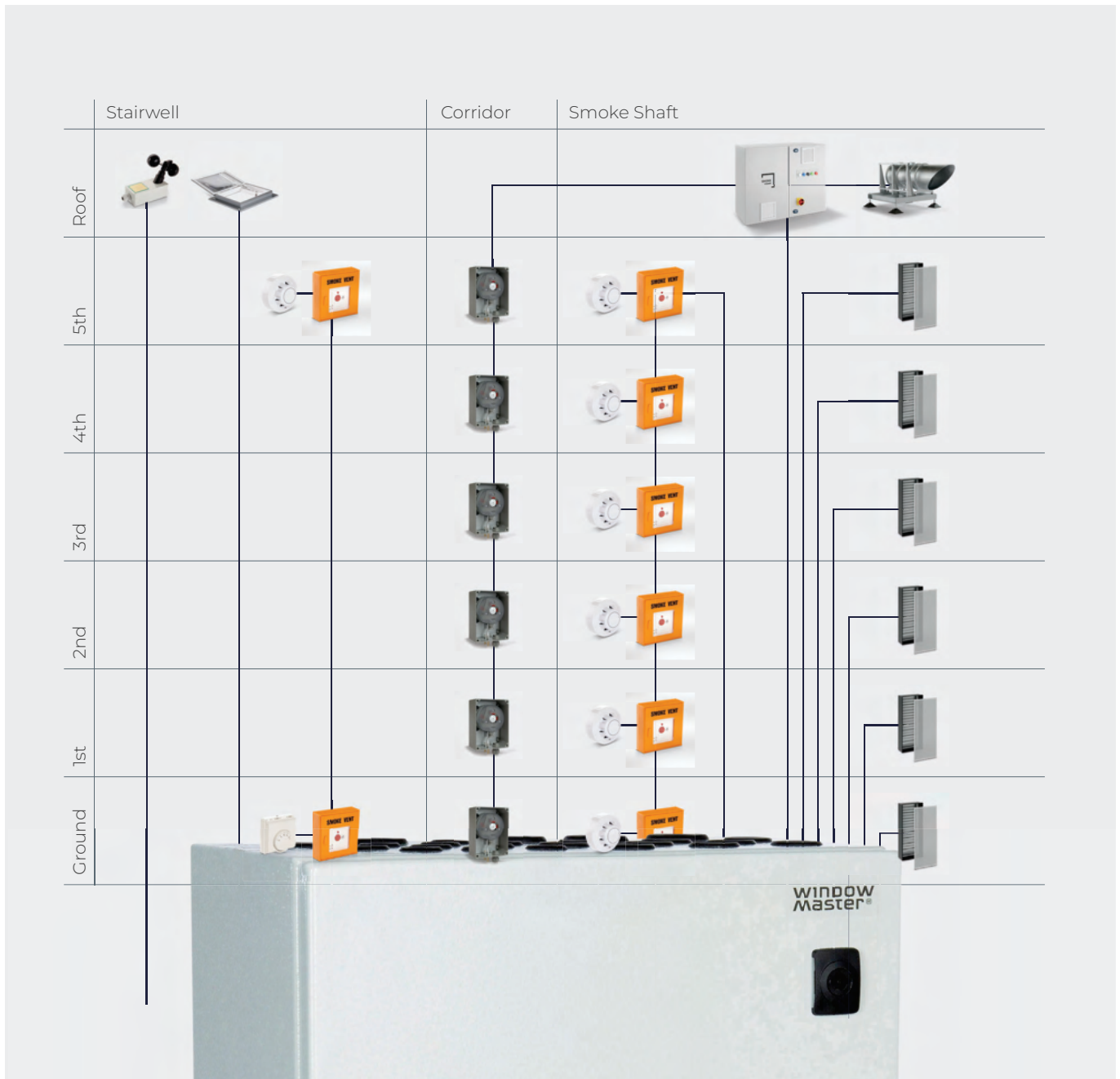
Wiring Schematic - SCP Single-Zone Network

This system features the FCP1000 fan control panel, which coordinates a dual smoke extract fan set, seamlessly integrated with a network of SCP control units. The comprehensive setup includes smoke dampers, pressure sensors, manual call points, smoke sensors, and a roof hatch, with system data all displayed on the SCP-HMI (Human-Machine Interface). This configuration ensures efficient mechanical and natural smoke ventilation, enhancing safety by providing real-time control and monitoring capabilities for swift and effective emergency response.



Wiring Schematic - FlexiSmoke Multi-Zone Network

This system features the FCP1000 fan control panel, which coordinates a dual smoke extract fan set, seamlessly integrated with a multi-zone FlexiSmoke control unit. The configuration includes smoke dampers, pressure sensors, manual call points, smoke sensors, and roof hatches. This setup ensures efficient mechanical and natural smoke ventilation across multiple zones, enhancing safety with its advanced control and monitoring capabilities for effective emergency response.



Inputs & Outputs

The FCP1000 control panel is equipped as standard with inputs for signals from a pressure switch, key switch, SCP or FlexiSmoke control unit, enabling seamless integration and versatile operation in various fire safety systems.



Inputs

1	BOOST
2	FIRE
3	PRESSURE

Outputs

4	FAN OUTPUT
5	FAULT OUTPUT

Compatible Fans



TITAN 7

Dual Fan Set

Compatible Inputs



BG7/FOS

Override Key-Switch



DPS24

Differential Pressure Switch



SCP500

Control Unit



SCP800

Control Unit



FlexiSmoke

Control Unit

Motor Output	24V DC
Motor Lines	1
Motor Load	5 Amp / 8 Amp

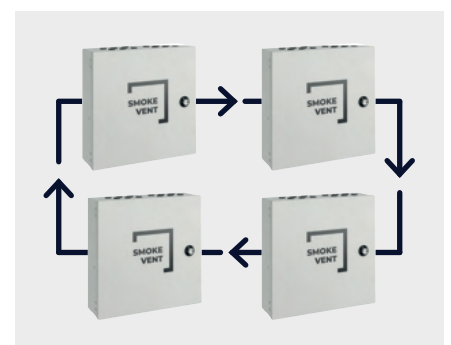
SCP

Single-zone smoke control unit. Can be linked to a fire alarm or smoke sensor for automatic opening of an AOV smoke vent(s). Manually triggered using manual call points. Facility to link up to 31 x control units together to form a multi-zone system.



Easy to Configure

System parameters are simple to configure via dip switches - making it easy to program the system logic as per the desired cause and effect.



Certification

Certified and tested in accordance to EN 12101-10



Bus Technology

Using MODBUS technology, multiple SCP control units can be networked to form larger multi-zone systems. Making it the ideal choice for larger buildings with smoke ventilation shafts and communal smoke corridors.

Part Codes

SCP-500	SCP Control Unit 24V 5 Amp
SCP-800	SCP Control Unit 24V 8 Amp

Technical Data

Primary Voltage (Input)	230V AC
Secondary Voltage (Output)	24V DC
Motor Load	5 Amp / 8 Amp
Motor Lines	1
Inputs For	Manual Call Point, Smoke Sensor, Fire Alarm, BMS, Switch, Thermostat, Wind/Rain Sensor
Operating Condition	-5°C - +40°C, max
Battery Backup	72 Hours
Size	365mm (w) x 353mm (h) x 103mm (d)
Protection Type	IP30
Delivery	1 x Control Unit, 2 x Batteries
Battery Size	2 x 12v 7Ah
Certification	EN 12101-10

SCP



Key

1	SSR-D Smoke Sensor
2	BG3/FOS Override Switch
3	BG6/FOS Override Key-Switch
4	BG1/S Breakglass Call Point
5	HMI-SCP Touchscreen User Interface
6	Fire Alarm Signal (NO/C)
7	SCP (Network)

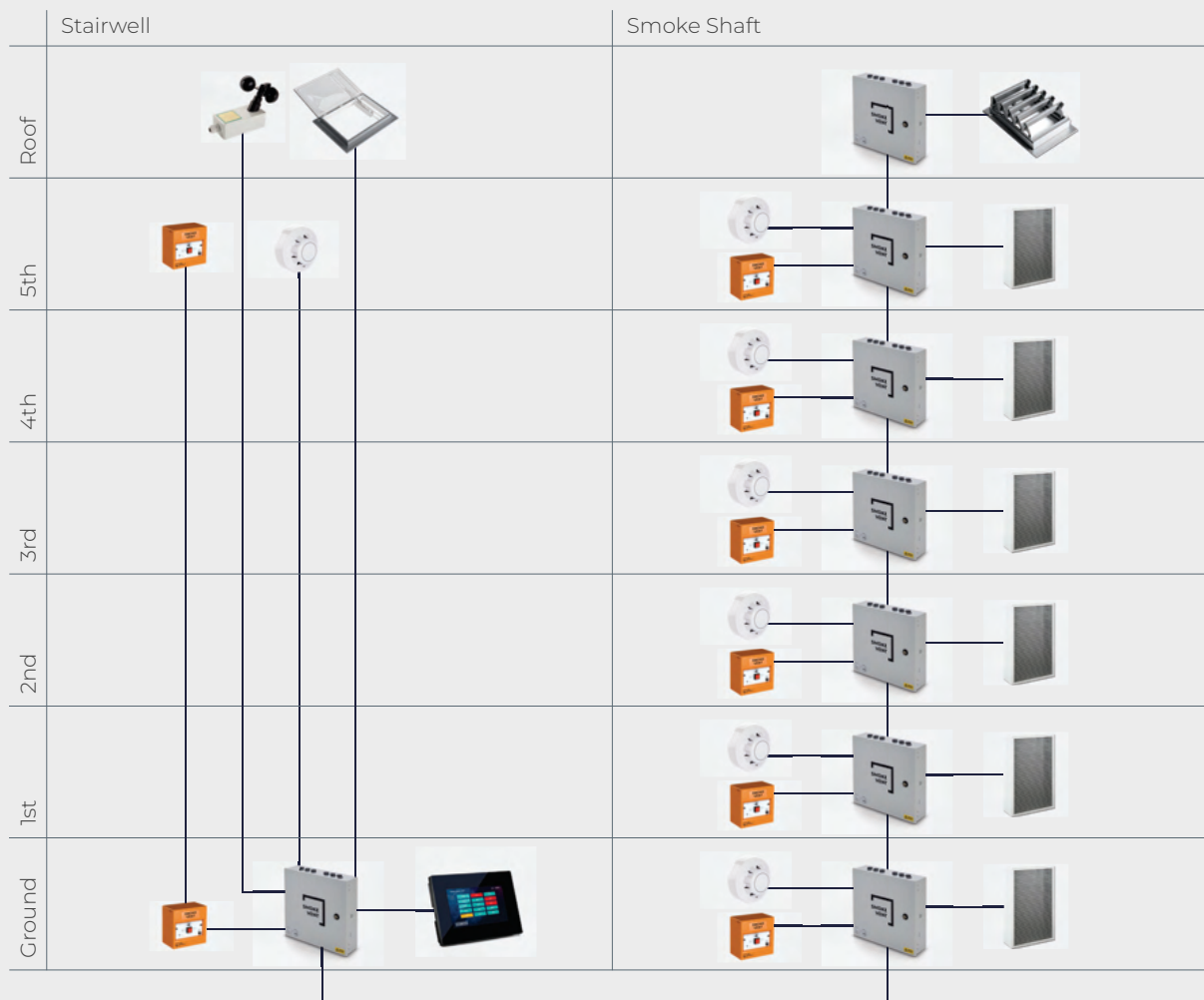
8	24V DC Smoke Vent
9	BMS with MODBUS
10	S50 Rocker Switch
11	RRTKEY Key Switch
12	WLA 331 Rain Sensor
13	WLA 330 Wind & Rain Sensor
14	TS2 Thermostat

The SCP single-zone control unit is perfect for stairwell applications with a single AOV.

Using MODBUS technology, multiple SCP's can be networked to form larger multi-zone systems. Making it the ideal choice for larger buildings with smoke ventilation shafts and communal smoke corridors.

The SCP can also be linked to BMS systems running MODBUS. This can then allow more complex cause and effect strategies to be implemented and controlled from a 3rd party BMS system. Advanced users are no longer locked into 'standard' functionality and can enjoy the flexibility to control any element of any SCP as they choose.

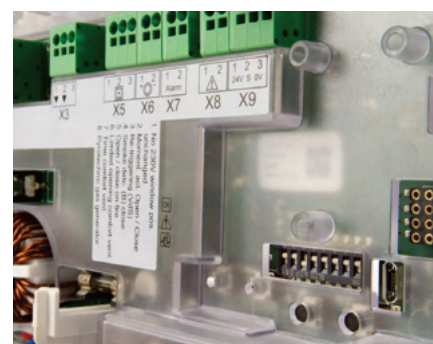
Wiring Schematic



Motor Output	24V DC
Motor Lines	1
Motor Load	4 Amp

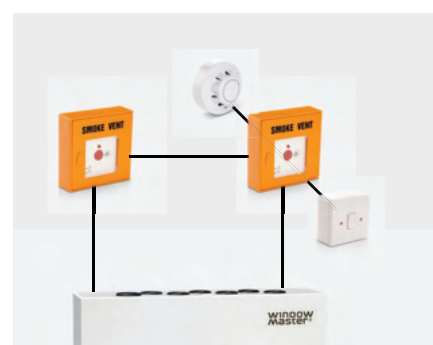
WSC 104

Compact smoke control panel for the control of $\pm 24V$ DC actuators or actuators with MotorLink® for smoke ventilation and daily comfort ventilation. The panel can be used in small and medium sized buildings as well as in building sections e.g., staircases and restaurants.



Easy to Configure

The smoke control panel is equipped with 8 DIP switches, for easy configuration of smoke and/or comfort ventilation settings.



Bus Technology

The panel uses bus technology and the overall cabling for break glass units, smoke detectors and keypads is significantly reduced compared to other types of smoke panels.

Certification

Certified and tested in accordance to EN 12101-10



Part Codes

WSC 104	WSC 104 Control Unit 24V 4 Amp
---------	--------------------------------

Technical Data

Primary Voltage (Input)	230V AC
Secondary Voltage (Output)	24V DC
Motor Load	4 Amp
Motor Lines	1
Inputs For	Manual Call Point, Smoke Sensor, Fire Alarm, Switch, Thermostat, Wind/Rain Sensor
Operating Condition	-5°C - +40°C, max
Battery Backup	72 Hours
Size	224mm (w) x 283mm (h) x 85mm (d)
Protection Type	IP30
Delivery	1 x Control Unit, 2 x Batteries
Battery Size	2 x 12v 3.4Ah
Certification	EN 12101-10

WSC 104

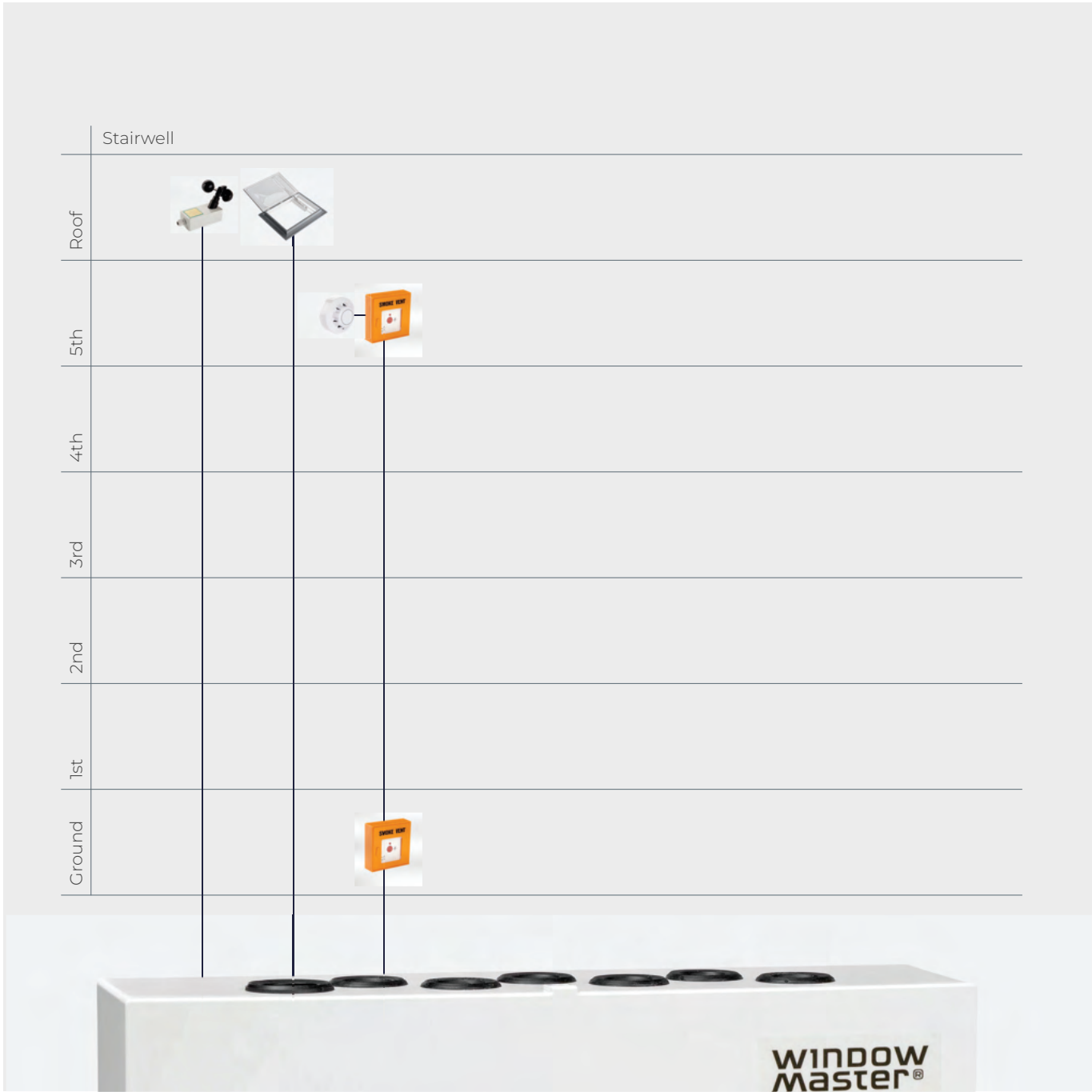


Key

1	SSR-D Smoke Sensor
2	WSK 501 Override Switch
3	Fire Alarm Signal (NO/C)
4	24V DC Smoke Vent

5	S50 Rocker Switch
6	RRTKEY Key Switch
7	WLA 331 Rain Sensor
8	WLA 330 Wind & Rain Sensor
9	TS2 Thermostat

Wiring Schematic



Motor Output	24V DC
Motor Lines	1 - 10
Motor Load	10 Amp / 20 Amp

Products / Controls / Smoke Vent Control Units

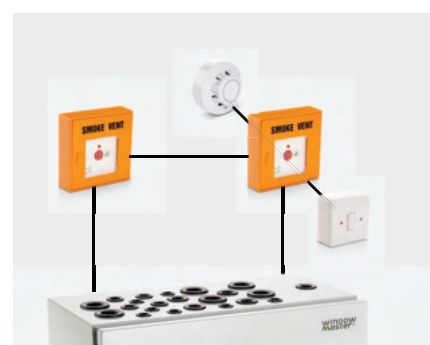
CompactSmoke™

Smoke control panel for the control of $\pm 24V$ DC actuators and actuators with MotorLink® for smoke ventilation and daily comfort ventilation. The panel can be used in small and medium sized buildings as well as in building sections e.g. stair cases and restaurants.



Touch Screen

Easy-to-use LCD touch screen makes the panel easy to configure, commission and maintain – without the need of a PC. System errors are described on screen to facilitate troubleshooting and initialisation.



Certification

Certified and tested in accordance to EN 12101-10



Bus Technology

The control unit uses bus technology meaning cabling for break glass units, smoke detectors and keypads is significantly reduced compared to other types of smoke panels.

Part Codes

WSC 310 PLUS-2	WSC Control Unit 24V 10 Amp 2 Motor Lines / 2 Inputs
WSC 320 PLUS-2	WSC Control Unit 24V 20 Amp 2 Motor Lines / 2 Inputs
WSC 320 PLUS-10	WSC Control Unit 24V 20 Amp 10 Motor Lines / 12 Inputs

Technical Data

Primary Voltage (Input)	230V AC
Secondary Voltage (Output)	24V DC
Motor Load	10 Amp / 20 Amp
Motor Lines	1-10
Inputs For	Manual Call Point, Smoke Sensor, Fire Alarm, BMS, Switch, Thermostat, Wind/Rain Sensor
Operating Condition	-5°C - +40°C, max
Battery Backup	72 Hours
Size	WSC 310 = 400mm (w) x 300mm (h) x 120mm (d) WSC 320 = 400mm (w) x 300mm (h) x 210mm (d)
Protection Type	IP54
Delivery	1 x Control Unit, 2 x Batteries
Battery Size	WSC 310 = 2 x 12v 7Ah / WSC 320 = 2 x 12v 12Ah
Certification	EN 12101-10

CompactSmoke™

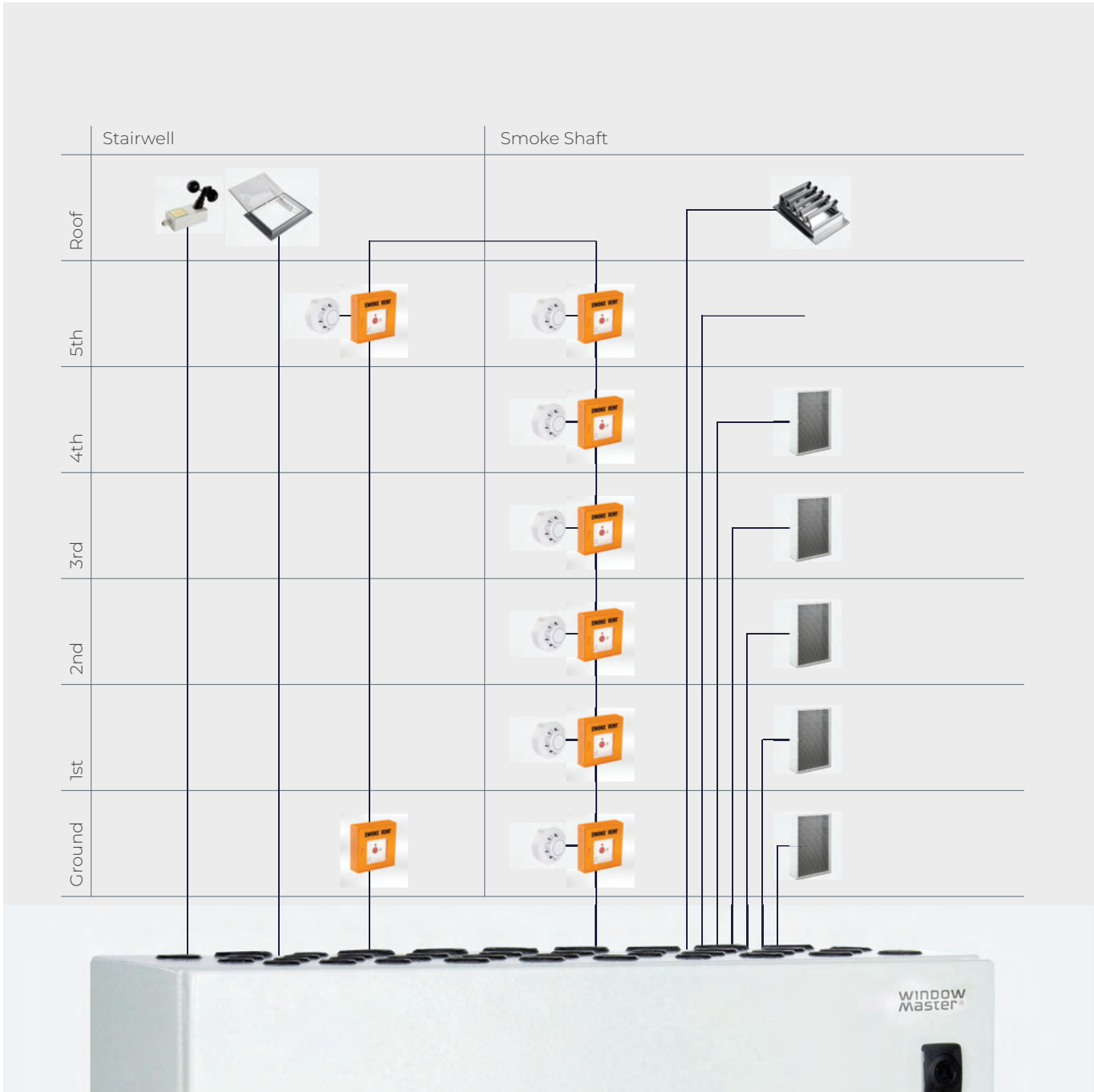


Key

1	SSR-D Smoke Sensor
2	WSK 501 Override Switch
3	BG6/FOS Override Key-Switch
4	BG1/S Breakglass Call Point
5	WSC MP Mimic Panel
6	Fire Alarm Signal (NO/C)
7	SCP (Network)

8	24V DC Smoke Vent
9	BMS (MODBUS, KNX or BACnet)
10	S50 Rocker Switch
11	RRTKEY Key Switch
12	WLA 331 Rain Sensor
13	WLA 330 Wind & Rain Sensor
14	TS2 Thermostat

Wiring Schematic



Motor Output	24V DC
Motor Lines	1 - 39
Motor Load	20 Amp / 40 Amp / 60 Amp

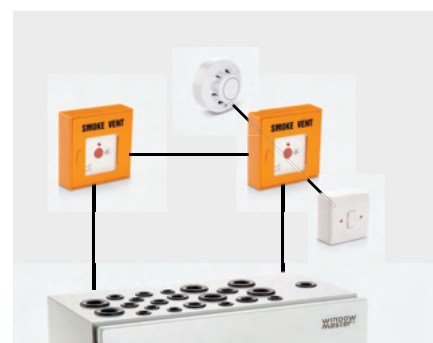
FlexiSmoke™

For heat and smoke ventilation (H&S) and daily comfort ventilation. Low power consumption 20A, 40A or 60A as standard per panel, more panels can easily be linked without any additional modules. For both $\pm 24V$ standard motors and/or motors with MotorLink®. Easy configuration via the built-in touch screen.



Touch Screen

Easy-to-use LCD touch screen makes the panel easy to configure, commission and maintain – without the need of a PC. System errors are described on screen to facilitate troubleshooting and initialisation.



Certification

Certified and tested in accordance to EN 12101-10



Bus Technology

The control unit uses bus technology meaning cabling for break glass units, smoke detectors and keypads is significantly reduced compared to other types of smoke panels.

Part Codes

WSC520-0000	WSC 520 Control Unit 24V 20 Amp 1 Motor Line / 1 Input
WSC520-0IS0	WSC 520 Control Unit 24V 20 Amp 5 Motor Lines / 5 Inputs
WSC520-0ISS	WSC 520 Control Unit 24V 20 Amp 9 Motor Lines / 6 Inputs
WSC520-0SSS	WSC 520 Control Unit 24V 20 Amp 13 Motor Lines / 4 Inputs
WSC520-0SS0	WSC 520 Control Unit 24V 20 Amp 13 Motor Lines / 3 Inputs
WSC540-0I00-0IS0	WSC 540 Control Unit 24V 40 Amp 6 Motor Lines / 9 Inputs
WSC540-0III-0III	WSC 540 Control Unit 24V 40 Amp 2 Motor Lines / 20 Inputs
WSC540-0IIS-0ISS	WSC 540 Control Unit 24V 40 Amp 14 Motor Lines / 14 Inputs
WSC540-0IS0-0IS0	WSC 540 Control Unit 24V 40 Amp 10 Motor Lines / 10 Inputs
WSC540-0ISS-0ISS	WSC 540 Control Unit 24V 40 Amp 18 Motor Lines / 12 Inputs
WSC540-0SSS-0SSS	WSC 540 Control Unit 24V 40 Amp 26 Motor Lines / 8 Inputs
WSC560-0IS0-0IS0-0IS0	WSC 560 Control Unit 24V 60 Amp 15 Motor Lines / 15 Inputs
WSC560-0ISS-0ISS-0ISS	WSC 560 Control Unit 24V 60 Amp 27 Motor Lines / 18 Inputs
WSC560-0ISS-0SSS-0SSS	WSC 560 Control Unit 24V 60 Amp 35 Motor Lines / 14 Inputs
WSC560-0SSS-0SSS-0SSS	WSC 560 Control Unit 24V 60 Amp 39 Motor Lines / 12 Inputs

* Additional versions are available

Technical Data

Primary Voltage (Input)	230V AC
Secondary Voltage (Output)	24V DC
Motor Load	20 Amp (WSC 520) / 40 Amp (WSC 540) / 60 Amp (WSC 560)
Motor Lines	1-39
Inputs For	Manual Call Point, Smoke Sensor, Fire Alarm, BMS, Switch, Thermostat, Wind/Rain Sensor
Operating Condition	-5°C - +40°C, max
Battery Backup	72 Hours
Size	380x600x210mm (WSC 520)/ 600x600x210mm (WSC 540) / 1000x760x210 mm (WSC 560)
Protection Type	IP54
Delivery	1 x Control Unit, 2 x Batteries
Battery Size	12V 18Ah
Certification	EN 12101-10

FlexiSmoke™



Key

1	SSR-D Smoke Sensor
2	WSK 501 Override Switch
3	BG6/FOS Override Key-Switch
4	BG1/S Breakglass Call Point
5	WSC MP Mimic Panel
6	Fire Alarm Signal (NO/C)
7	SCP (Network)

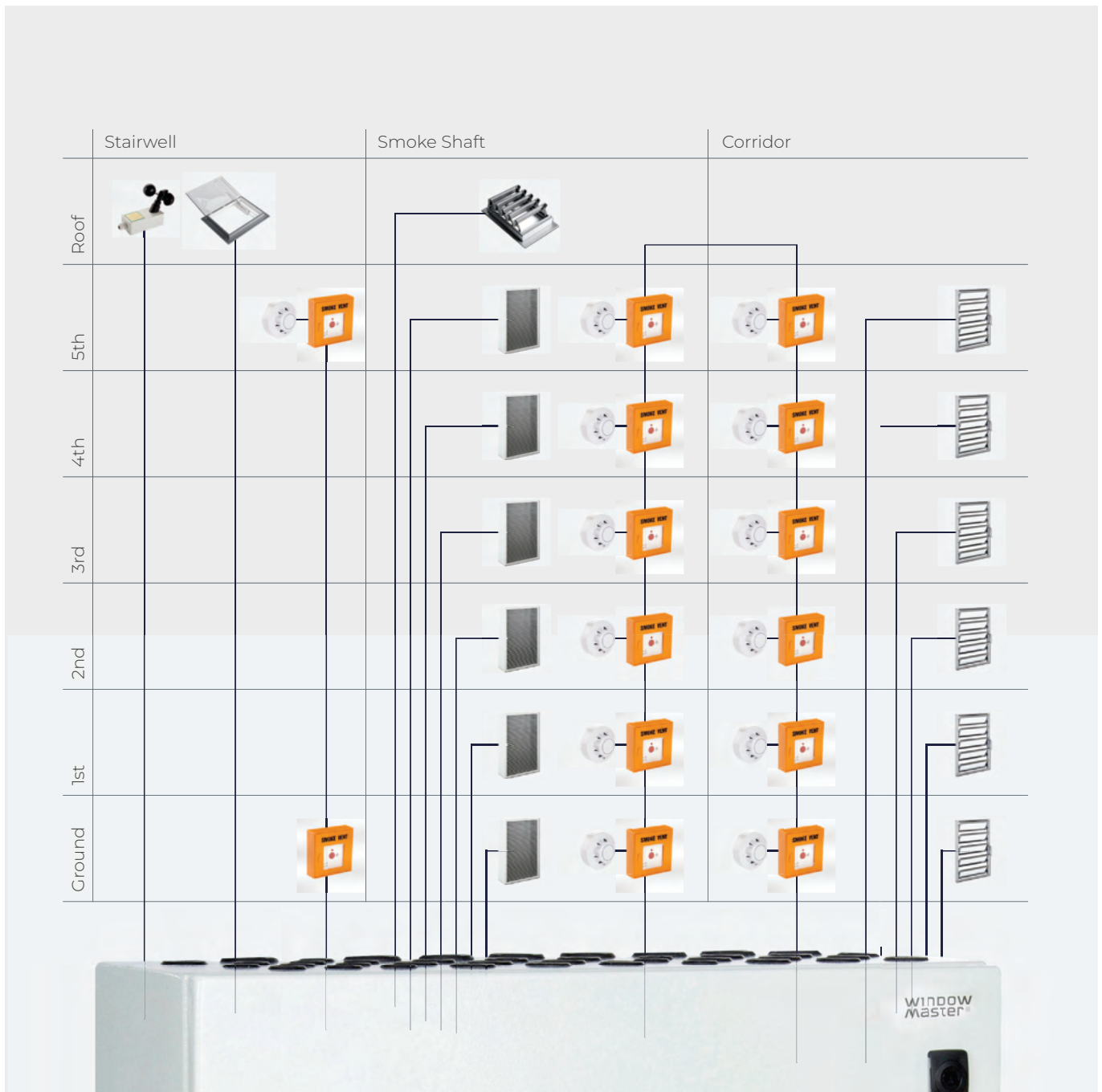
8	24V DC Smoke Vent
9	BMS (MODBUS, KNX or BACnet)
10	S50 Rocker Switch
11	RRTKEY Key Switch
12	WLA 331 Rain Sensor
13	WLA 330 Wind & Rain Sensor
14	TS2 Thermostat

FlexiSmoke™ is a range of modular smoke control panels for the control of $\pm 24V$ DC and MotorLink® window actuators in large and medium-sized areas, e.g. shopping-centres, schools and sports halls.

With the combination of several panels, FlexiSmoke™ can be used in very large buildings or areas.

Up to 39 smoke zones and comfort groups can be implemented, depending on panel variant type.

Wiring Schematic



Accessories

BG1/S Manual Call Point



BG3-PRO Manual Call Point



BG4/FOS Key Switch



BG6/FOS Key Switch



BG7/FOS Key Switch



PSP1 Pressure Sampling Plate



WSK 501 Manual Call Point



WSK 503 Manual Call Point



SSR Smoke Sensor



WLA 331 Rain Sensor



WLA 330 Wind & Rain Sensor



S50 Rocker Switch



HMI-SCP Touch Screen SCP



HMI-KNX Touch Screen KNX



RRTKEY Key Switch



DPS24 Pressure Switch



ATS1 Automatic Trans. Switch



TS2 Thermostat



Actuators (Various Types Available)



CTS2 CO2 Sensor





Get in touch

If you have any queries regarding our products or would like some support on your next project please do not hesitate to contact our helpful and friendly team:

01242 620318

sales@tealproducts.co.uk

Well stocked

We keep a large stock of both Manual & Electric Window Controls including popular brands - Highline, Mingardi, Windowmaster, Comunello, & Aumuller.

Training

Our Technical Department can also offer in-house product training on our Manual and Electric Window Opener Control range. Please call us for further information.

Helpful team

The team at Teal Products prides itself on first class customer service. Ensuring you are guaranteed the very best response from initial enquiry to installation.

Next day delivery

Place your order for before 2.00pm on weekdays for next day delivery. Need something early? We also offer timed deliveries - Pre-12.00pm or Pre-10.30am.

Expert advice

Contact our Technical Department if you need help selecting the correct product. With 20+ years experience in the industry we can help you with all your Window Control needs.

Accredited

IFC certified, CHAS accredited and a certified WindowMaster partner it's safe to say you're in good hands!



Unit 8A
Orchard Industrial Estate
Toddington
Cheltenham
GL54 5EB

01242 620318
sales@tealproducts.co.uk
tealproducts.co.uk