

# TITAN 7

The TITAN 7 dual fan set is supplied pre-mounted on a skid for easy installation. Designed to enhance fire safety, this unit efficiently extracts smoke from buildings via an internal smoke shaft during a fire. The pre-fabricated design of the TITAN 7 dual fan set not only streamlines the installation process but also significantly reduces on-site time.



## Controls

The TITAN 7 dual fan set can be supplied with a pre-fitted FCP1000 control unit, further simplifying and accelerating on-site commissioning.



## Application



Mechanical Ventilation

## Pre-Fab Options

- F1 = Dual smoke extract fan on skid.
- F2 = Dual smoke extract fan on skid with control panel mounting frame.
- F3 = Dual smoke extract fan on skid with control panel mounting frame and FCP1000 control unit.

## Part Codes

TITAN7-M5-F1	TITAN 7 Dual Fan Set 710mm 5.5kW 400Pa on F1 Pre-Fab Assembly
TITAN7-M5-F2	TITAN 7 Dual Fan Set 710mm 5.5kW 400Pa on F2 Pre-Fab Assembly
TITAN7-M5-F3-G5	TITAN 7 Dual Fan Set 710mm 5.5kW 400Pa & FCP1000-G5 Fan Control Panel on F3 Pre-Fab Assembly
TITAN7-M7-F1	TITAN 7 Dual Fan Set 710mm 7.5kW 600Pa on F1 Pre-Fab Assembly
TITAN7-M7-F2	TITAN 7 Dual Fan Set 710mm 7.5kW 600Pa on F2 Pre-Fab Assembly
TITAN7-M7-F3-G7	TITAN 7 Dual Fan Set 710mm 7.5kW 600Pa & FCP1000-G7 Fan Control Panel on F3 Pre-Fab Assembly

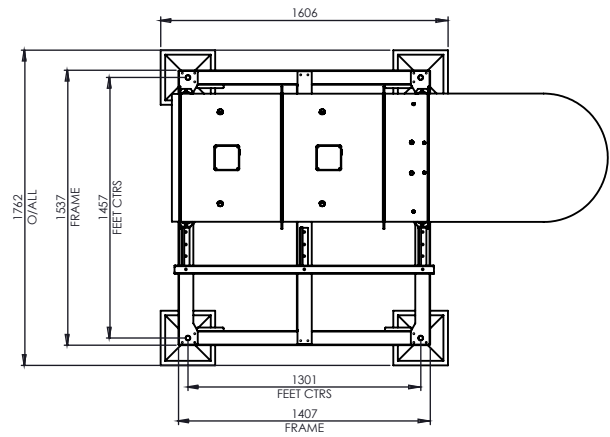
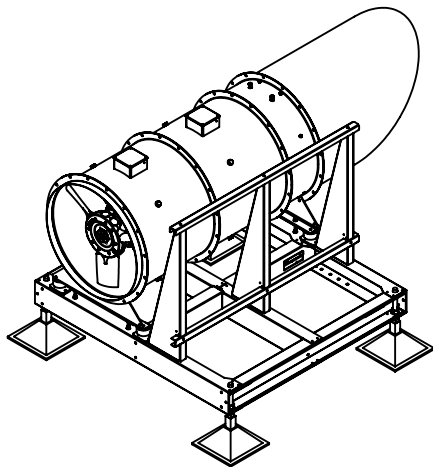
### Item Code Composition:

1	Fan Type 710mm	= TITAN7
2	Motor Type 5.5kW 7.5kW	= M5 = M7
3	Pre-Fab Frame Type Standard Skid Skid & Control Panel Mounting Frame Skid, Control Panel Mounting Frame & Fan Control Panel	= F1 = F2 = F3
4	Fan Control Panel Type FCP1000-G5 (5.5kW) FCP1000-G7 (7.5kW)	= G5 = G7

### Technical Data

	TITAN7-M5	TITAN7-M7
Voltage	400V 3ph 50Hz	400V 3ph 50Hz
Current Consumption	5.5kW	7.5kW
Fan Speed	2880 r/min	2880 r/min
Diameter	710mm	710mm
Hub Size	181mm	251mm
Impeller	Axial, Aluminium	Axial, Aluminium
Extract Rate	6.00 m <sup>3</sup> /s	6.00 m <sup>3</sup> /s
Static Pressure	400Pa	600Pa
Temp Rating	F300 for 2hrs EN12101-3	F300 for 2hrs EN12101-3

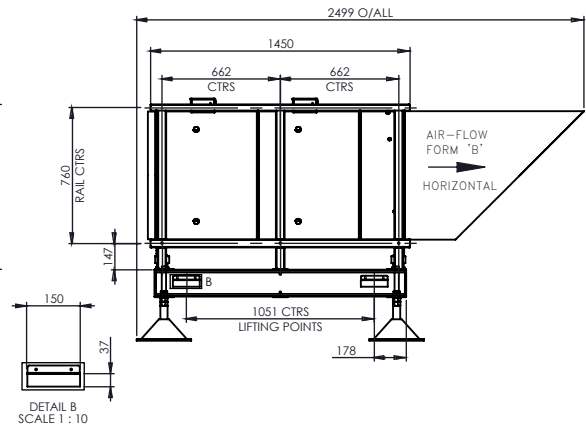
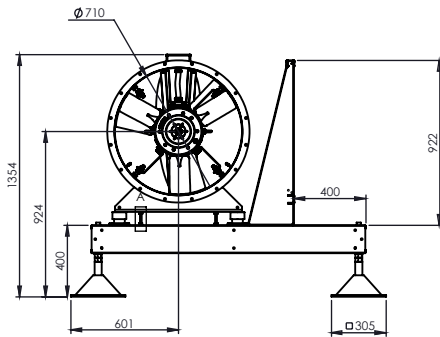
# Dimensions



NYLOC  
DO NOT REMOVE

LOOSEN THIS  
NUT ONCE  
PRE-  
FABRICATED  
UNIT IS IN SITU

DETAIL A  
SCALE 1 : 5



The above drawing dimensions illustrate a typical TITAN7-M5-F2 dual fan set.

For accurate drawings please contact our sales team.

## Frame Types



### F1

Dual fan set on skid.



### F2

Dual fan set on skid with control panel mounting frame.



### F3

Dual fan set on skid with control panel mounting frame and FCP1000 control unit.

## Compatible Controls



### FCP1000

Control Unit