

Sizes	Bespoke
Free Area	1m <sup>2</sup> or 1.5m <sup>2</sup>

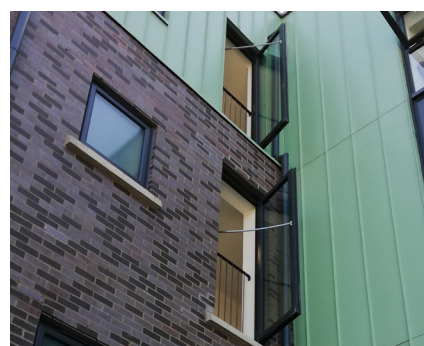
# SV-W-W2

SV-W-W2 AOV side hung window's are used as part of a natural smoke ventilation system. The main function of smoke exhaust windows is to remove smoke from communal areas such as lobbies and/or stairwells.



## Design

Actuator type and opening angle and direction appropriately selected to meet required free area(s).



## Certification

Certified and tested in accordance to EN 12101-2



## Applications

- » End of Corridor
- » Head of Stairwell

## Technical Data

Frame	Aluminium
Glass	Double Glazed (Standard) or Triple Glazed
Geometric Free Area	1m <sup>2</sup> or 1.5m <sup>2</sup> (depending on vent size)
Voltage	24V DC
Opening	85°
Opening Speed	> 60 secs
Current Consumption	2 - 5.2 Amp (depending on vent size)
Colour	Custom RAL colour
Certification	EN 12101-2
Cable Dimension	2-Core
Delivery Includes	1 x Vent & 2 x Actuators

## Dimensions

