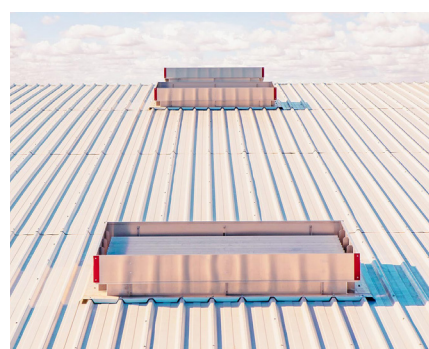


Sizes	966x1500mm 966x1800mm 966x2000mm 1186x1186mm
Free Area	1m ² or 1.5m ²

SV-R-L4

The SV-R-L4 AOV roof louvre is a multi louvred ventilator that provides an economic method of ventilation, allowing the removal of large quantities of warm air and/or smoke from a building within a short period of time.



Blades

Double insulated aluminium as standard. Can also be supplied in polycarbonate (16mm or 25mm) or glass (single or glass).



Certification

Certified and tested in accordance to EN 12101-2



Applications

- » Head of Smoke Shaft
- » Head of Stairwell

Part Codes

SV-R-L4-966X1500	AOV Roof Louvre 966x1500mm 1.09m ²
SV-R-L4-966X1800	AOV Roof Louvre 966x1800mm 1.31m ²
SV-R-L4-966X2000	AOV Roof Louvre 966x2000mm 1.46m ²

* Alternative sizes are available

Technical Data

Blades	Solid insulated aluminium blades (Standard) / Polycarbonate blades / Glass blades
Geometric Free Area	1m ² or 1.5m ² (depending on vent size)
U Value	Overall 'U' Value 1.75 W/m ² K
Voltage	24V DC
Opening	90°
Opening Speed	> 60 secs
Current Consumption	1 Amp
Colour	Mill Finish / Powder Coated
Certification	EN 12101-2
Cable Dimension	2-Core
Delivery Includes	1 x Vent & 1 x Actuator

Dimensions

