

WMD 820

FOLDING ARM ACTUATOR

OPENING STROKE SIZES

90° or 98° (programmable)

PUSH FORCE

250 N

VOLTAGE

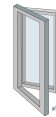
24V DC (+/- 10%)



DESCRIPTION

Designed for doors and surface mounting. For replacement air for windows and doors. Can be used together with espagnolette WMB. Synchronization of up to two actuators – no need for an external synchronization module. Genuine position feedback when using control unit with MotorLink®. Soft close function. The electronics in this actuator can be programmed to suit specific requirements – i.e. pressure- and traction force, stroke, speed/sound level – with the WAT 100 programming box (also after installation). Built-in electronic load switch-off/end stop. Electronic actuator with micro controller. The actuator has an integrated reverse function to ensure a prolonged life span of the window gaskets. Easy mounting. Output for electronic lock max 1A. Potential free feedback for fully open (special version).

WINDOW TYPES



APPLICATION



COMFORT
VENTILATION

COLOURS

- Silver Anodised
- ⊗ Custom RAL colour

CERTIFICATION



TECHNICAL DATA

Voltage	24V DC (+/- 10%)
Push Force	250 N
Pull Force	250 N
Locking Force	2000 N
Opening Stroke	90° or 98° (programmable)
Opening Speed	< 60 sec
Current Consumption	1.0 A
Operating Conditions	-5°C - +74°C
Switch-on Duration	ED 40% (max. 4min. per 10min)
Colour	Silver Anodised or custom RAL colour
IP Rating	IP 32
Certification	EN 12101-2
Life Span	10,000 opening and closing movements
Delivery Includes	1 x Actuator (fixing brackets sold separately)
Flex Length	5 m
Cable Dimensions	2-Core (plus 3 commination wires)
Min. window width	> 750 mm (Side-Hung)
Max. window width	< 1200 mm (Side-Hung)
Synchronisation	Yes (programmable)

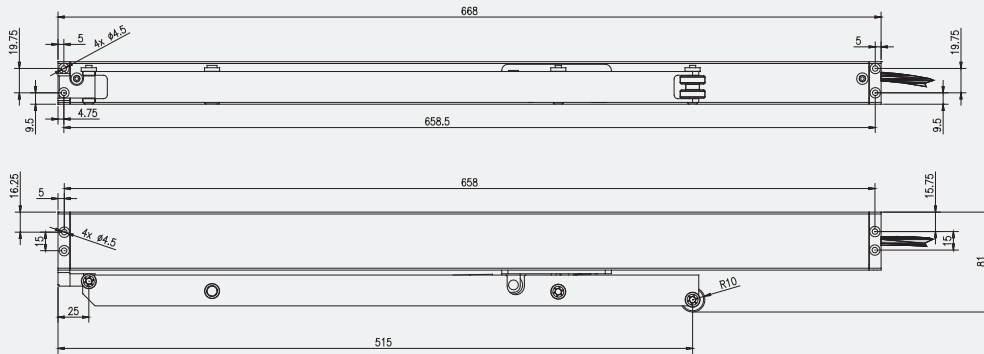
ACCESSORIES

WAB825	- Inward Opening Bracket
WDB820B	- Standard Bracket
WDB820L	- Inward Opening Bracket (Left)
WDB820M	- Vent Bracket
WDB820R	- Inward Opening Bracket (Right)

PART CODES

WMD820-1G-IN	- WMD 820 Actuator (inward opening) 24 V 98° Silver
WMD820-1G-OUT	- WMD 820 Actuator (outward opening) 24 V 90° Silver
WMD820-2G-IN	- WMD 820 Actuator (inward opening) (synchronised) 24 V 98° Silver
WMD820-2G-OUT	- WMD 820 Actuator (outward opening) (synchronised) 24 V 90° Silver

DIMENSIONS



CONTROLS



WSC 204
AOV Control Unit



WSK 320
Override Switch



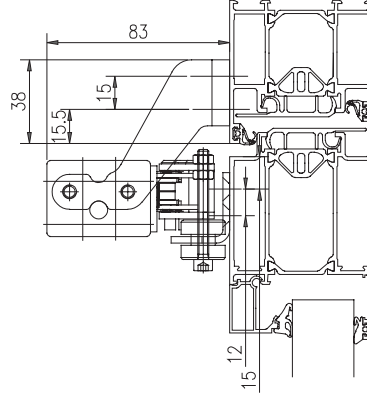
SSR-D
Smoke Sensor



WSC 310
AOV Control Unit

**INSTALLATION
EXAMPLES**

Outward Opening



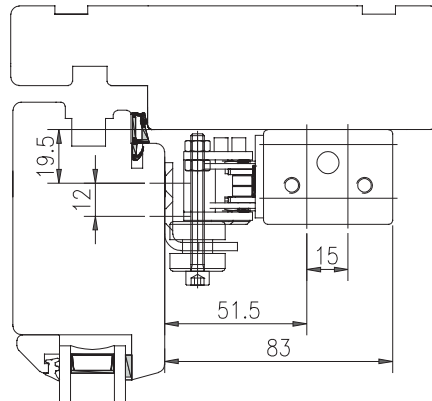
WDB 820M



WDB 820B



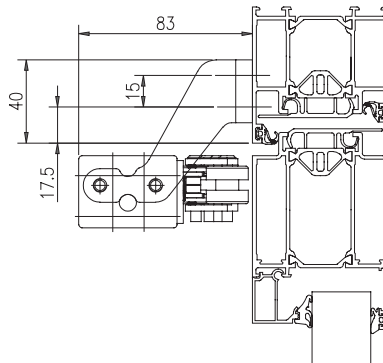
Outward Opening



WDB 820M



Outward Opening
(Day-Day Access)

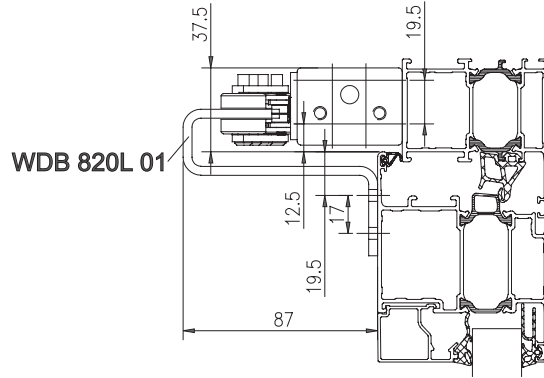


WDB 820B



**INSTALLATION
EXAMPLES**

Inward Opening



WDB 820L / WDB 820R

